

# *The Siberian Iris*

*Spring 2006*

Property of The Society for Siberian Irises

# AITKEN'S SALMON CREEK GARDEN

608 NW 119th Street, Vancouver, WA 98685

Phone 360-573-4472 - [aitken@flowerfantasy.net](mailto:aitken@flowerfantasy.net)



**HALEAKALA** (HAH-lay-ah-kah-LAH – The House of the Sun) (M. Smith '06) SIB, 36". (Dip.) This iris embodies the best of pure yellow color saturation and magnificent round overlapping generously proportioned flowers. Ruffled, 1-2 branches and up to 5 buds. During sequential rebloom in Portland, which lasts from May until August, the stems put up 2 or 3 branches with double sockets and a triple terminal.

**\$35.00**

## MAJESTIC OVERTURES

(Aitken '06) SIB, 48". (Tet.) 5 buds in the spring, 7 to 9 buds during rebloom. A direct descendant of Coronation Anthem, this iris embodies all of the pomp and ceremony of its elegant parent, and of tetraploids in general. It is a robust plant with sturdy bloom stems and deep green fountain foliage. Sequential rebloom, can last from May into August in the Northwest.

**\$35.00**



**Please add \$8.00 for shipping if ordering from this ad.**

**Send \$3.00 for our catalog featuring many more introductions,  
with color pictures.**

**Check out our website [www.flowerfantasy.net](http://www.flowerfantasy.net)**



# THE SIBERIAN IRIS

VOLUME 11, NUMBER 1

SPRING 2006

President's Message, <i>Roy Epperson</i>	2
Society for Siberian Irises	3
Siberian Checklist Notice	3
2005 Siberian Registrations & Introductions, <i>Roy Epperson</i>	4
Sibro Information	14
New Members, <i>Susan Grigg</i>	15
In Memoriam, <i>Judy Hollingworth</i>	16
2009 Siberian/Species Convention Update, <i>Bill Dougherty</i>	17
Request for Guest Irises for 2009, <i>Bill Dougherty</i>	18
How Siberians Found a Home in North Carolina, <i>Susan Grigg</i>	20
<b>Dunlop &amp; Cole</b> 2006 Ad	22 & 23
From <i>Siberspace</i> , <i>Sibro Members</i>	24
"Siberians Save Women's Life", <i>Ellen Gallagher</i>	31
2006 Display Gardens, <i>Bill Dougherty</i>	32
American Iris Society Photo Contest, <i>Kitty Loberg</i>	38
<b>Iris City Gardens</b> ad	39
Back Issues of The Siberian Iris	40
The Siberian Iris Advertising Rates	41
Society for Siberian Irises slide sets	41
Commercial Directory ads	42
SSI Officers and Directors	43
SSI Committees	44

---

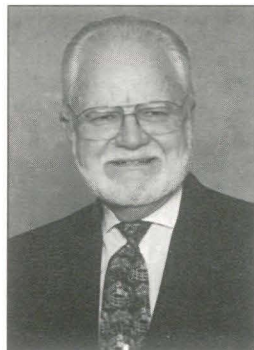
**Front Cover Photo:** "Bee on Flower" (**RIVERDANCE**). This was taken by Edmundas Kondratas of Kaunas, Lithuania.

**Inside Front Cover:** Aitken's Salmon Creek Garden ad

**Inside Back Cover:** Windwood Gardens' ad

**Back Cover:** Joe Pye Weed's Garden ad

## PRESIDENT'S MESSAGE



The highlight of the Siberian world for 2006 will be the mini-convention of Siberians and species to be held on Sunday, May 28, the day following the regular AIS convention in Portland, OR. Each and every one of the beardless guests sent to this convention will be planted in the two tour gardens for the mini-convention: the garden of Ellen and Tom Abrego and the garden of Lorena Reid. For efficiency of time, the regular board meeting and the general meeting of the Society for Siberian Irises will be held during the regular AIS convention. Sunday, May 28, will be spent in visiting these two gardens and will conclude with an awards banquet. All activities are headquartered at the same hotel as the AIS convention. Registration details for the mini-convention are on page 22 of TSI Fall 2005. Please note that due to the inability of the gardens to accommodate buses, registration will be restricted to 300 enthusiasts. Keith McNames, Registrar, indicates 134 registrants as of February 13. There is still space available for YOU!

It continues to disturb me that garden markers and catalogs/sale lists incorrectly list hybrid Siberians as, e.g., *I. siberica* **SO VAN GOGH**. This is an incorrect listing. Only Siberian species should be labeled *I. siberica*. Unfortunately this type of incorrect labeling is seen in pots and plants offered for sale to the general public. Be on the lookout for this practice and do not hesitate to inform the sales person of this error. Calvin Helsley states "I'm of the opinion that there are very few *Iris siberica* genes remaining in modern hybrids." [Back to the Future with Siberian Irises, *TSI Fall 2005*, p. 13]

The membership of SSI owes a debt of gratitude to Ellen Gallagher, Editor of *The Siberian Iris*. An editor's task is never done and editors usually are criticized more often than thanked. Thank you, Ellen, for your continuing commitment to SSI and thank you especially for the excellent color photos and the full-bleed cover of *TSI Fall 2005*!

I hope to see each of you in Portland May 22-27 and especially for the Siberian/Species Mini-convention on May 28!

*E. Roy Epperson*

# THE SOCIETY FOR SIBERIAN IRISES

We welcome new members. Send your dues to the Membership Secretary, Susan Grigg, 105 Trotters Ridge Drive, Raleigh, NC 27614-9620; (919)870-8345; smgrigg@bellsouth.net

Dues: Single Annual	\$ 5.00	Family Annual	\$ 6.00
Single Triennial	13.00	Family Triennial	15.00
Single Life	100.00	Family Life	120.00

*The Siberian Iris* is published twice yearly by The Society for Siberian Irises, a section of the American Iris Society. The editorial office is at 1689 Riverside Drive, Berlin, NH 03570. Deadlines for copy are Feb.1st and Sept. 1st, but earlier receipt is appreciated by the Editor. Reprinting is by permission of the author and editor with due acknowledgment.

Society for Siberian irises web page: <http://www.socsib.org/>



## SIBERIAN CHECKLIST

The cumulative Siberian iris checklist will be available again in 2006. It will include Siberian registrations and introductions updated through 2005 and the price is \$8.00 for North American addresses and \$10.00 (USD) for overseas payable to the Society for Siberian Irises. Contact Ellen Gallagher, 1689 Riverside Drive, Berlin, NH 03570 or email: ellengalla@yahoo.com

# 2005 SIBERIAN REGISTRATIONS AND INTRODUCTIONS

(From the *Registrations and Introductions in 2005* published by The American Iris Society as compiled by Mike and Anne Lowe, Registrar-Recorder and catalogued by E. Roy Epperson of SSI)

**ACROSS THE WIDE MISSOURI** (Calvin Helsley, R. 2005) Sdlg. 05-14 SIB (dip.) (24" 64 cm) ML. S. and style arms medium violet, S. very wide, recurved back against F.; F. medium blue-violet, signal small, white, nearly hidden. Ships Are Sailing X Where Eagles Dare.

**ALI'I** (Marky Smith, R. 2004) SIB (dip.). Aitken's Salmon Creek Garden 2005.

**ANUSIA** (Lech Komarnicki, R. 2005) Sdlg. 97/8 Sib 20-A SIB (dip.) (43" 110 cm) ML. S. sky blue; style arms light blue, aqua ribs, sky blue crests; F. sky blue, hafts light brown in throat; signal white, almost completely overlaid light yellow. Ueber den Wolken X Tamberg sdlg: (Rejoice Always x Blue Rosebud)

**ATLANTIC CROSSING** (Olga Wells, R. 2005) Sdlg. MCETET1 SIB (tet.) (30-36" 76-91 cm) M&RE. S. deep violet; style arms lighter violet; F. deeper violet, signal white. Parentage unknown, BIS seed exchange, seed from Currier McEwen.

**AUDREY RAE** (Neal Pohlman, R. 2005) Sdlg. S201g SIB (dip.) (34" 86 cm) M&RE. S. red-purple (RHS 68B), blue lines at midrib; style arms blue; F. red-purple (68B), blue lines radiating from white center, signal white with blue undertone. Chilled Wine X unknown. Pohlman 2005

**BAREFOOT BOY** (Marty Schafer and Jan Sacks, R. 2005) Sdlg. S97-27A-10 SIB (dip.) (35" 89 cm) M. Light blue self with greenish veins and highlights, color blue types at (RHS 95D), overall impression (100D), signal white, dark blue veins. S92-71-10: (S89-13-1: (Percheron x Silver Illusion) x Careless Sally) X S92-13-12: (S85-18-1: (Young Lady x Harbor Mist) x S87-6-2: (Kenabee x Alter Ego)). Joe Pye Weed's Garden 2005.

**BELIEVE IN ANGELS** (Calvin Helsley, R. 2005) Sdlg. 04-17 SIB (dip.) (33" 84 cm) ML. White self, signal bright lemon yellow, some veining half way down F., all petals edged with small ruffles; flat form. Ships are Sailing X Where Eagles Dare.

**BERRY AND ICE** (Barry Blyth, R. 2005) Sdlg. J249-4 SIB (dip.) (30" 76 cm) ML. S. light red-violet; style arms pastel pinkish-white suffused turquoise; F. deep red-violet, lighter area in center becoming a lemon signal; pronounced sweet fragrance. Seed from M. Schafer cross S97-34. S92-75-15: (S89-16-1: (Reprise x Mad Magenta) x S89-9-2: (Isabelle x Silver Illusion)) X S92-56-13: (S89-5-2: (Forrest McCord x Isabelle) x Careless Sally). Tempo Two 2005/06

**BLAUES SCHWEBEN** (Tomas Tamberg, R. 2005) Sdlg. SSTT666 SIB (dip.) (35" 89 cm) VL. S. light blue self; small white signal; flat form, wide. Sailor's Fancy X Signals Blue.

**BLUSHING VIOLET** (Robert Hollingworth, R. 2005) Sdlg. 98G2A7 SIB (dip.) (35" 89 cm) VL. S. light blue; style arms light blue, red-violet edge; F. medium blue, red-violet blush on shoulders and upper edge of F. Gull's Wing X 96U1B26: (Mesa Pearl x 95J2B6: (88V2C11: (83M2B15: (Steve Varner x 80X1C8: (Super Ego x Anniversary)) x Ueber den Wolken) x Silver Illusion)). Windwood Gardens 2005.

**BOBOTY** (Jiri Dudek, R. 2005) Sdlg. 98/SIB/08 SIB (39" 100 cm) L. Light violet-blue self, F. white spot, prominent darker veins, golden brown hafts. Dudlik X Zweites Hundert.

**BOURNEMOUTH BALL GOWN** (Ian Smith, R. 2005) Sdlg. S/XY/2 SIB (tet.) (35" 89 cm) EM. Dark blue-violet self, signal absent. Parentage unknown. British Iris Society 2005.

**BROTHER KEN** (Neal Pohlman, R. 2005) Sdlg. 05X6 SIB (dip.) (27" 69 cm) M. S. red-purple (RHS 64B); style arms purple, veined purple in center; F. red-purple veined blue, signal yellow veined blue, white lines radiating to outside. Parentage unknown.

**COME SAIL AWAY** (Calvin Helsley, R. 2005) Sdlg. 04-10 SIB (dip.) (28" 71 cm) ML. S. white, small, edged with pleated ruffling, held at 45° angle; style arms white, short, wide; F. white, wide, round, ruffled, horizontal flare, golden yellow in throat, signal absent. At the Ballet X Off She Goes.

**COZAD GAYLE** (Neal Pohlman, R. 2005) Sdlg. 05X2g SIB (dip.) (31" 79 cm) M. S. light blue veined darker; style arms darker than S.; F. light blue, darker veins, signal yellow gold with white star. Parentage unknown.

**CRIMSON CLOISONNÉ** (J. T. Aitken, R. 2005) SIB (dip.) (40 » 102 cm) ML. S. light raspberry; style arms pale red-violet, blue on midribs; F. raspberry red, white halo around signal, silver edge; signal yellow. Band of Angels X unknown. Aitken's Salmon Creek Garden 2005.

**DAUNTLESS DOUGLAS** (J. Owings Rebert, R. 2005) Sdlg. CG1-05 SIB (dip.) (28" 71 cm) M. Silver blue self; signal gold and copper. Parentage unknown.

**DEAR CURRIER** (Jeff Dunlop, R. 2004) SIB (dip.). Fieldstone Gardens, Inc. 2005.

**DIRIGO BLACK KNIGHT** (John White, R. 2003) SIB (dip.). Eartheart Gardens 2005.

**DIRIGO TIFFNEY PINK** (John White, R. 2002) SIB (dip.). Eartheart Gardens 2005.

**DREI QUELLEN** (Tomas Tamberg, R. 2005) Sdlg. SSTT804 SIB (tet.) (39" 100 cm) E. Dark violet-blue self, signal white. Sdlg. "Ursel Welsch" X I. typhifolia, tetraploid.

**EASY ERIC** (J. Owings Rebert, R. 2005) Sdlg. CG3-05 SIB (dip.) (30" 76 cm) M. Plum purple self; signal bronze and cream. Parentage unknown.

**ERSTE SAHNE** (Tomas Tamberg, R. 2005) Sdlg. SSTT644 SIB (tet.) (25.5" 65 cm) ML. Cream white self; F. wide; signal yellow. Viel Crème X SSTT506 converted: (Gelbe Moeve x Silver Illusion).

**GRANDMARIE'S ANGEL** (Kevin Morley, R. 2004) SIB (dip.). Morley 2005.

**GROSSER WEIN** (Tomas Tamberg, R. 2005) Sdlg. SSTT608 SIB (tet.) (35.5" 90 cm) M. S. medium wine red; style arms light wine red; F. medium wine red, signal small, white surrounded by bluish hue. Berlin Purple Wine X wine red Tamberg sdlg.

**HAL GRIFFIE** (Joan Roberts, R. 2005) Sdlg. 103-4 SIB (dip.) (28-30" 71-76 cm) ML. Red-violet self; bright blue blaze around signal area. Lady Vanessa X Pink Haze. Friendship Gardens 2005.

**HANDSOME HARRY** (Louise Bellagamba, R. 2002) SIB (dip.). Bella Vista 2005.



**HAVING FUN** (Bob Bauer and John Coble, R. 2005) Sdlg. S98B-1 SIB (dip.) (30" 76 cm) M. S. (6) light rose violet; style arms usually absent; F. (6 or more) rose violet, lighter edges, light blue-lavender shaded halo, signal white broken by violet veins, yellow-green in throat; multipetal (12-15), hose-in-hose form. Just Because X S93G: (S89A-1: (Shirley Pope x Sultan's Ruby) x Uzushio). Ensata Gardens 2005.

**HEAVENLY ROSE** (Neal Pohlman, R. 2005) Sdlg. 201A SIB (dip.) (31" 79 cm) E. S. pale lavender-pink, lighter than F.; style arms flushed pink; F. pink-lavender, darker on outer area, lighter center, signal golden yellow. Mesa Pearl X unknown. Pohlman 2005.

**HELLBLAU IM ZENTRUM** (Tomas Tamberg, R. 2005) Sdlg. SSTT304 SIB (tet.) (27.5" 70 cm) M. S. dark blue, mottled white; style arms very light blue; F. dark blue, mottled in center, very wide F. Regency Belle X mottled Buerge sdlg. Joe Pye Weed's Garden 2005.

**HOW ABOUT ROMANCE** (Calvin Helsley, R. 2005) Sdlg. 04-07 SIB (dip.) (28" 71 cm) M. S. vibrant rose-orchid, darker veining in center; style arms slightly lighter rose-orchid, darker crests; F. vibrant rose-orchid, medium violet area around signal, signal small, white, heavily veined brown-violet blend; broad, flat form. Active Duty X Quidam.

**I WISH YOU LOVE** (David Silverberg, R. 2005) Sdlg. IHG-11 SIB (dip.) (34" 83 cm) M. S. and style arms white; F. white, gold shoulders. In Her Glory X unknown.

**JOAN OF LORRAINE** (Lech Komarnicki, R. 2005) Sdlg. 99/00 Sib 4aT-A SIB (tet.) (41" 105 cm) L-VL. White self, F. veined green, signal yellow-green, small; semi-flared, waved. Seed from BIS seed exchange: (Berlin Lance x unknown) X seed from BIS seed exchange: (Weisse Etagen x unknown).

**JOYCE COLE** (Dean Cole, R. 2005) Sdlg. DC-98-68-4 SIB (tet.) (30" 76 cm) ML. S. white, wide, lightly ruffled; style arms white, wide, cream influence at rib; F. white, prominent green veins blending to yellow and green hafts, signal green veins above yellow-green hafts; ruffled. Tiffany Lass X Shall We Dance.

**JOY TO THE WORLD** (Calvin Helsley, R. 2005) Sdlg. 05-12 SIB (dip.) (30" 76 cm) ML. Rosy wine self, F. veined darker, signal large, white, veined dark rosy wine, small fluted ruffles on S. and F. Trim the Velvet X Jatinwane.

**JUKEBOX** (Bob Bauer and John Coble, R. 2005) Sdlg. S93N-1 SIB (tet.) (26" 66 cm) M. S. rose violet, lighter edges; style arms light blue, rosy blush, horns from turquoise midrib; F. dark rose velvet, edges lighter, blue-violet centers, signal dusted green flecked white into the halo. Tet. sdlg: (Harpwell Happiness x converted Temper Tantrum sdlg.) X converted tet. sdlg.: (Mesa Pearl x Silver Illusion). Ensata Gardens 2005.

**KENT ARRIVAL** (Olga Wells, R. 2005) Sdlg. W991S SIB (tet.) (30" 76 cm) M&RE. S. violet (RHS 89C); style arms light violet-blue (89D), dark midrib; F. deeper violet-blue (89B), signal black and gold. Parentage unknown, BIS seed exchange, seed from Currier McEwen.

**KEUKA OUTLET** (Dana Borglum, R. 2004) SIB (dip.). Borglum's Iris Gardens 2005.

**KEUKA WINE TRAIL** (Dana Borglum, R. 2004) SIB (dip.). Borglum's Iris Gardens 2005.

**KIMBERLY ANN** (Neal Pohlman, R. 2005) Sdlg. 22007 SIB (dip.) (28" 71cm) L. S. and style arms light blue (RHS 97C), style arms darker blue midrib; F. light blue (97C) veined blue, dark brown signal. Bedford Lass X 206B: (King of Kings x white seedling from SIGNA seed). Pohlman 2005.

**LADY'S CHAIN** (Marty Schafer and Jan Sacks, R. 2005) Sdlg. S96-67-1 SIB (dip.) (24" 61 cm) M. S. open bright yellow (RHS 12A), fade to light yellow (12C); style arms light yellow (12D); F. bright yellow (14A), does not fade, raised signal same color as F. S93-28-1: (Butter and Sugar x Percheron) x Hello Yellow) X Tom Schaefer. Joe Pye Weed's Garden 2005.

**LEOPARD'S FUR** (Yelena Datsuk, R. 2005) Sdlg. T02-703/3 SIB (sino-sib) (22" 55 cm) M. S. cream white; style arms cream; F. cream yellow, lighter toward edges, brown-violet specks around dark yellow signal. Parentage unknown, seed from Tomas Tamberg.

**LILAC RAIN** (Jean Witt by Will Plotner, R. 2005) Sdlg. WW1-WSJW. SIB (sino-sib) (42-44" 107-112 cm) EM. S. white flushed pale lavender, angled outward; style arms white, pale lavender crests; F. white with lines of pale lavender dots that are darker around signal area, signal faint light greenish-yellow, pendant, wavy edges. Parentage unknown, mixed sino-sib seed, X (I. delavayi x unknown).

**LINE 'EM UP** (Calvin Helsley, R. 2005) Sdlg. 05-04 SIB (dip.) (22" 56 cm) M. S. medium blue tinted lavender; style arms medium blue tinted red-violet; F. medium blue tinted lavender near edges, very slight white signal with dark blue veining extending over entire petal; flaring, ruffled. Ships are Sailing X Jatinwane.

**LUGOVOY MOTYLIOK** (Yelena Datsuk, R. 2005) Sdlg. T02-703/2 SIB (sino-sib) (20" 50 cm) M. S. light blue, darker midrib; style arms blue-pansy violet; F. light blue, lighter at edges, dark violet specks around yellow signal. Parentage unknown, seed from Tomas Tamberg.

**MAREK ANTONIUSZ** (Lech Komarnicki, R. 2005) Sdlg. 97SIGNA SIB (dip.) (41" 105 cm) EM. S. deep red-violet; style arms light blue infused pink-violet that fades to near white; F. deep red-purple, signal bluish white, silvery green in throat. Seed from SIGNA exchange, Percheron X unknown.

**MARIAH'S RUBY** (Kevin Morley, R. 2004) SIB (dip.) Morley 2005.

**MIDNIGHT PURPLE** (Currier McEwen, deceased, by Sharon Whitney, R. 2005) Sdlg. T6 87/125?. SIB (tet.) (36" 91 cm) L&RE. S. dark violet-blue (RHS 89B); style arms violet (86A), tufted, ruffled; F. dark violet-blue (89B), signal grey (202D), slight green tint (153D) ending in a solid, nearly black area extending as a halo around the top side of the signal; diamond dusted; arching ruffled form. T5 79/196: (T4 75/108); (T3 73/59): (Ewen X T1 70/119): (Polly Dodge x 67/160): ((White Swirl x unknown) x (Eric the Red x unknown)))) x T3 73/59 ER#10) Dear Dianne) X Regency Buck. Eartheart Gardens 2005.

**MISS PORTLAND** (Jeff Dunlop, R. 2005) Sdlg. 96086-1 T SIB (tet.) (30" 76 cm) ML. S. mid-blue (RHS 99B), veined slightly darker, ruffled; style arms mid-blue with a touch of aqua, wide, ruffled; F. mid-blue, fine white wire edge, wide, deeply ruffled, gold hafts, white signal. T7 87/77-1, white McEwen sdlg., X Chatter Box Belle.

**MOON DAZZLE** (Bob Bauer and John Coble, R. 2005) Sdlg. S95V-1 SIB (tet.) (26" 66 cm) M. S. white; style arms white, wide, ruffled edges, feathered horns from midribs; F. white shaded chartreuse in center, signal yellow. Jukebox X self. Ensata Gardens 2005.

**MORGAN LEIGH** (Neal Pohlman, R. 2005) Sdlg. 206B SIB (dip.) (29" 74 cm) L. White (RHS 155A) self, small yellow signal; large flower. King of Kings X white sdlg. from SIGNA seed. Pohlman 2005.

**MY BIG JIM** (Verna Cook, deceased, by Pierce County Iris Society, R. 2005) SIB (dip.) (36-40" 91-102 cm) M. Deep blue self, F. finely edged white, yellow blaze with white center. Parentage unknown.

**MY FIRST KISS** (Dean Cole, R. 2004) SIB (tet.). Fieldstone Gardens, Inc. 2005

**NEAL MY LOVE** (Darlene Pohlman, R. 2005) Sdlg. S5021 SIB (dip.) (21.5" 55 cm) E. S. vivid violet (RHS 87A); style arms amethyst-violet (84C) with hint of blue, narrow white rim, signal white surrounded by green-gold. Parentage unknown.

**ONE TRUE LOVE** (Calvin Helsley, R. 2005) Sdlg. 01-08 SIB (dip.) (34" 86 cm) M. S. rosy orchid-pink, darker veining; style arms light orchid-pink, darker edges, light turquoise-violet midrib, wide; F. rosy orchid-pink, darker veining, bluish area below signal, signal white, heavily veined bluish-orchid, light golden brown shoulders, flaring, ruffled. 96-3, unknown X At the Ballet.

**PAUL ROBERT** (Neal Pohlman, R. 2005) Sdlg. 0522 SIB (dip.) (22" 56 cm) M. S. mineral violet (RHS 85D), opens darker, fades quickly; style arms (85D); F. amethyst-violet, lighter rim, gold haft, white lines radiate from center. Parentage unknown.

**PERFECT VISION** (Cy Bartlett, R. 1996) SIB (tet.). Lingen Nursery 2005.

**PERPETUAL EMOTION** (Calvin Helsley, R. 2005) Sdlg. 04-13 SIB (dip.) (36" 91 cm) ML. S. lavender orchid; style arms pale blue-orchid, turquoise midribs, wide; F. lavender orchid, wide rosy-violet edges, signals large, creamy white becoming yellow in throat; ruffled multicolored flowers. Where Eagles Dare X Nancy May.

**PLAYFUL OREO** (J. Owings Rebert, R. 2005) Sdlg. CG-C-OR SIB (dip.) (30" 76 cm) M. Deep purple self, signal ivory and tan, extensive. Parentage unknown.

**RAINBOW FLAVOURS** (Barry Blyth, R. 2005) Sdlg. J246-7 SIB (dip.) (26" 66 cm) EM. S. opal flushed lavender-pink; style arms softest pastel turquoise over white; F. lavender-blue, bright yellow signal with bright violet veining, horizontally flared, very ruffled. Seed from M. Schafer cross S97-25. Sib to Oriental Carpet. Tempo Two 2005-06.



**REGAL RUSTY** (J. Owings Rebert, R. 2005) Sdlg. CG2-05 SIB (dip.) (34" 86 cm) M. Deep violet self, S. slightly darker; signal rust and cream. Parentage unknown.

**RHYTHM OF THE WINDS** (Calvin Helsley, R. 2005) Sdlg. 05-16 SIB (dip.) (34" 86 cm) M. S. light blue; style arms same veined darker; F. medium blue, signal is dusting of white beneath style arms; ruffled. Where Eagles Dare X Ships are Sailing.

**SENECA MIDNIGHT BLUES** (Dana Borglum, R. 2004) SIB (dip.). Borglum's Iris Gardens 2005.

**SENECA PASTEL CHARM** (Dana Borglum, R. 2004) SIB (dip.). Borglum's Iris Gardens 2005.

**SENECA RAINDANCE** (Dana Borglum, R. 2004) SIB (dip.). Borglum's Iris Gardens 2005.

**SENECA VICEROY** (Dana Borglum, R. 2004) SIB (dip.). Borglum's Iris Gardens 2005.

**SIMPLE DELIGHTS** (Calvin Helsley, R. 2005) Sdlg. 01-04 SIB (dip.) (32" 81 cm) M. S. light lavender-pink, veined darker, ruffled, forms cup with style arms; style arms light lavender-pink, light turquoise midrib, wide, short; F. light lavender-pink veined and dotted darker, pale yellow flush around signal, signal small pale creamy yellow veined soft golden brown, round, horizontal flaring, lightly waved. Purple Sand X Parentage unknown, probably At the Ballet.

**SITNO** (Jiri Dudek, R. 2005) Sdlg. 98/SIB/5 SIB (31" 80 cm) ML. S. light azure blue; F. azure blue, sporadic darker veins, wavy. Lilienthal X Zweites Hundert.

**SIX LOVE** (Robert Hollingworth, R. 2005) Sdlg. 00P3B11 SIB (dip.) (24" 61 cm) EM. S. absent; style arms very light blue, feathered; F. (6) medium lavender-pink; signal cream, yellow haft. 97B7B10: (Parasol x Very Victorian) X 97B7A6, sib. Windwood Gardens 2005.

**SNEZHNY VALS** (Boris Krashennnikov, R. 2005) SIB (dip.) (28" 70 cm) ML. White self; yellow signal. White Swirl X Butter and Sugar.

**SO BE IT** (Barry Blyth, R. 2004) SIB (dip.). Tempo Two 2005/06.

**SO VAN GOGH** (Marty Schafer and Jan Sacks, R. 2005) Sdlg. S97-20-

10 SIB (dip.) (30" 76 cm) EM. S. and style arms medium blue-violet (RHS 90B to 91B), darker veining and edges (89B at darkest); F. yellow (13C), lighter at edge, darkest at signal, veined blue-violet (89A to 90B), darkest at tip, signal yellow, veined deep blue-violet, blends into F. Sarah Tiffney X Banish Misfortune. Joe Pye Weed's Garden 2005.

**SPENCER** (Cy Bartlett, R. 2005) Sdlg. C-01-01 SIB (tet.) (32-34" 81-86 cm) ML. S. and F. dark royal blue edged white; style arms dark blue; signal white; ruffled. Perfect Vision X Plissee.

**STORM CHASER** (Barry Blyth, R. 2005) Sdlg. J246-5 SIB (dip.) (32" 81 cm) EM. S. blue to lavender-blue; style arms pastel lavender, faint turquoise midrib; F. deeper lavender-blue, small gold signal; slight sweet fragrance. Seed from M. Schafer cross S97-25. Sib to Oriental Carpet. Tempo Two 2005/06.

**STORM TOSSED** (Barry Blyth, R. 2004) SIB (dip.). Tempo Two 2005/06.

**SUMMERFOLK** (Barry Blyth, R. 2004) SIB (dip.) Tempo Two 2005/06.

**SUTTON VALENCE** (Olga Wells, R. 2005) Sdlg. F0B4 SIB (tet.) (36" 91 cm) M. Deep violet self; signal cream, gold in throat. Parentage unknown, BIS seed exchange, seed from Currier McEwen.

**SWEETUMS** (Calvin Helsley, R. 2005) Sdlg. 99-3 SIB (dip.) (18" 46 cm) EM. White self, very slight yellow signal; flowers proportionately small. Jatinwane X At the Ballet.

**TEMPLE PEACE** (J. Owings Rebert, R. 2005) Sdlg. CG-D1 SIB (dip.) (38" 97 cm) M. Bluebird blue on blue self, hint of violet; signal predominantly gold, touch of white. Parentage unknown.

**TEMPLE TRIUMPH** (J. Owings Rebert, R. 2005) Sdlg. GR-D-05 SIB (dip.) (29" 74 cm) M. Mediterranean blue self; signal gold and beige. Parentage unknown.

**TEMPLE TRUMPETER** (J. Owings Rebert, R. 2005) Sdlg. CG3-05 SIB (dip.) (32" 81 cm) M. Plum wine self; signal ivory and gold. Parentage unknown.

**THANK YOU JEAN** (Lech Komarnicki, R. 2005) Sdlg. 99/00 Witt A SIB (dip.) (30-31" 75-80 cm) M. S. white, marked with irregular

lavender-blue lines; style arms white, densely stitched and dotted blue-violet along midrib; F. white veined light blue, deeper blue-violet lines forming rectangular area below small, light yellow signal 40 chromosome hybrids; seeds from Jean Witt via SIGNA seed exchange.

**THEN SINGS MY SOUL** (Calvin Helsley, R. 2005) Sdlg. 05-02 SIB (dip.) (32" 81 cm) EM. S. red-violet; style arms same, copper tints; F. violet-blue, reddish tints, signal white, very small, veined violet-blue; rounded form. Ragtime Dance X Where Eagles Dare.

**TOMMY** (Kevin Morley, R. 2004) SIB (dip.), Morley 2005.

**TRANQUILITY BASE** (Jeff Dunlop, R. 2005) Sdlg. 95099-5 T SIB (tet.) (32" 81 cm) ML. S. deep violet (RHS 88A), darker veins at center, fine ruffling; style arms slightly lighter than S., aqua highlights; F. deep violet veined slightly darker, ruffling toward center, slightly pinched giving open triangular effect, brown hafts, darker violet signal. Tiffany Lass X T7 87/80-1, wine red McEwen sdlg.

**TROUBLED WATERS** (Barry Blyth, R. 2005) Sdlg. J252-5 SIB (dip.) (36" 91 cm) EM. S. blue to blue-lavender; style arms blue-white hazed turquoise; F. deep blue-lavender with edge of S. color; signal absent. Seed from M. Schafer cross S97-43. Sib to So Be It. Tempo Two 2005/06.

**WEALDEN BUTTERFLY** (Olga Wells, R. 2005) Sdlg. FOB1 SIB (dip.) (48" 122 cm) EML. S. light blue; style arms slightly deeper blue than S.; F. ivory ground veined violet-blue, veins merging to solid color on lower half. Flight of Butterflies X Cambridge. British Iris Society 2005.

**WEALDEN MYSTERY** (Olga Wells, R. 2005) Sdlg. FOB5 SIB (dip.) (36" 91 cm) EM. S. vivid bright blue-violet, upright; style arms bright blue-violet held at 45o angle deeper red-violet either side of rib; F. ivory ground, deep yellow-gold hafts, bright blue-violet signal lines radiate out blending to solid blue-violet at tip; small flower, vertical form. Flight of Butterflies X Cambridge.

**WEALDEN SKIES** (Olga Wells, R. 2005) Sdlg. SBSS1 SIB (dip.) (40" 102 cm) ML. S. ivory; style arms cream, yellow rib; F. spoon shaped, ivory, faint blue edge at shoulder, yellow signal. Soft Blue X Summer Sky.

**WEALDEN SUMMER** (Olga Wells, R. 2005) Sdlg. KSO1 SIB (dip.)

(28" 71 cm) M. S. deep sky blue (near RHS 107B), upright; style arms blue-white, horizontal; F. sky blue (near 107C), spoon shaped, signal white, sky blue lines, light yellow in throat; small, dainty, vertical form. Soft Blue X Summer Sky.

**WEISSES SCHWEBEN** (Tomas Tamberg, R. 2005) Sdlg. SSTT665 SIB (dip.) (26.5" 65 cm) M. White self; small yellowish signal; wide, flat form. Sib to Blaues Schweben.

**WHEN WE SAIL** (Calvin Helsley, R. 2005) Sdlg. 01-01 SIB (dip.) (30" 76 cm) M. White self, style arms have creamy white midrib; slight soft golden-yellow signal beneath style arms with some veining down into F.; fluted ruffling. Esther C.D.M. X Just Because.

**WHITE COLLAR BLUE** (Barry Blyth, R. 2004) SIB (dip.). Tempo Two 2005/06.

**WODNICA** (Lech Komarnicki, R. 2005) Sdlg. 97/8 Sib 17-A SIB (dip.) (30" 75 cm) M. S. light lavender-blue, held at 45°; style arms lighter lavender-blue, conspicuous turquoise ribs; F. lavender blue deeper than S., rounded, small light yellow signal, old gold at hafts. 96/7 Sib 1: unknown SIB from BIS seed exchange, X Cambridge.



## SIBROB

The Sibrob is an internet mailing list (discussion group) centered on Siberian irises. It is free and open to all from novices to more experienced growers. It also functions as a part of the Round Robin program of the American Iris Society. Any questions please contact: ellengalla@yahoo.com

Subscribe: [sibrob-subscribe@yahoogroups.com](mailto:sibrob-subscribe@yahoogroups.com)  
Siberian list archives: <http://www.hort.net/lists/sibrob>





# WELCOME TO OUR NEW MEMBERS

**ELEANOR BAKER**

1293 Mansfield Road  
Mansfield, TN 38236

**M. JACKIE GLASSCOCK**

212 Dorchester Road  
Louisville, KY 40223-2808

**MADELINE JOHNSON**

431 CR 2715  
Mount Pleasant, TX 75455

**VIVIAN LAMBERT**

140 Unaka Drive  
Mosheim, TN 37818

**LOIS ROSE**

P.O. Box 30  
Partlow, VA 22534-0030

**ROBERT WALKINGSHAW**

1 Charles River Court  
Wellesley, MA 02482

**EVELYN BARFIELD-DAVIS**

601 Farrah Circle  
Dothan, AL 36301

**C. E. HEANEY, JR.**

9918 Broadmoor Road  
Omaha, NE 68114

**TERRY JOHNSON**

RD 7  
Hughes Line  
Masterton 5921  
New Zealand

**MICHAEL LOCKATELL**

500 Pantela Drive  
Richmond, VA 23235-5020

**PAUL & MELISSA SIZEMORE**

5000 Comstock Road  
Chapel Hill, TN 37034

**RUTH B. BARKER**

45 Slashpine Circle  
Hockessin, DE 19707-9206

**VERNA JENNINGS**

3000 County Road 462  
Savannah, MO 64485

**DIANNE KLINE**

685 Brent Street  
Pocatello, ID 83201

**SONG SPARROW  
PERENNIAL FARMS**

13101 E. Rye Road  
Avalon, WI 53505

**MIKE THEISSEN**

2403 Peace Valley Farm Road  
Hermann, MO 65041

# IN MEMORIAM

## **Elizabeth A. Wood, a benefactor of The Society for Siberian Irises**

*Submitted by Judy Hollingworth*

It is with sadness that we note the passing of Elizabeth (Betty) A. Wood of Freehold, New Jersey on March 23, 2006 at Central State Medical Center surrounded by family and friends. She and her husband, Ira Wood, were committed irisarians and they attended every AIS Convention from 1954-1977. After Ira's death, Betty and Region 19 wanted to find a way to honor him.

They had a serious interest in Siberians and decided on the Ira Wood Medal to be presented each year to the Morgan Award winner. She and Dave Silverberg, then RVP of Region 19, worked together to develop and fund the medal and the costs were shared equally between Betty and the Region. Again, when the Ira Wood Medal had become the Morgan-Wood Medal, Betty gave a further generous donation to SSI to fund the casting of new medals.

Betty was born in 1912 in New York City and earned a BA at Barnard and an MA and PhD at Bryn Mawr College. After teaching at Bryn Mawr and Barnard for eight years, she was the first female scientist ever hired at Bell Laboratories where she spent 24 years as a research physical crystallographer.

In her later years Betty enjoyed an active life revolving around plays, sailing, music, French and German discussion groups and extensive travel. We were fortunate that Siberians were also an important part of her life.



# 2009 SIBERIAN/SPECIES CONVENTION UPDATE

*by Bill Dougherty, Minnesota*

The Iris Society of Minnesota will host the 2009 Siberian/Species tour, and this is what we have in the planning for this event.

The four-day convention will feature iris blooming in gardens in the Twin Cities area and in Mora, one hour north of Minneapolis. Over a dozen private and commercial gardens wish to host guest gardens.

The convention hotel will be the Ramada Thunderbird Hotel, Bloomington, Minnesota which is just minutes away from the airport and next to the Mall of America. A special feature will be a planting of Morgan-Wood winners at the hotel.

The master planting will be hosted by the Minnesota Landscape Arboretum. The Arboretum features more than 1,000 acres of unique public gardens: spectacular annual and perennial display gardens, collections of plants developed for northern climates.

Rice Creek Gardens will be a commercial stop on the tour. This was a stop on last year's Regional mini-convention and guests also saw extensive collections of blooming peonies and Showy Lady Slipper Orchids, which is Minnesota's State Flower.

At the Mora Heritage Center, the Town and Country Garden Club, assisted by ISM, hosts a garden of historical Siberian iris.

We are also trying to organize a Botanical Art display, boutique, and classes open to the gardening public. A convention website link will soon be available through our main web site location: [www.irisnmn.org](http://www.irisnmn.org)



# **2009 SIBERIAN/SPECIES CONVENTION**

**TWIN CITIES AREA - JUNE 2009**

## **Request for Iris**

### **Guest Iris Procedures**

1. We will report, in the convention website, the condition of guest iris in the Fall of 2007 and 2008.
2. If a plant blooms outside convention time, photos and conditions will be reported at convention time and in a synopsis of all guests on the ISM website the Fall of 2009.
3. AIS convention bed guidelines will be followed for display of guests.

### **Dates for Receiving Guest Iris:**

Beginning Spring of 2006 with the latest possible receipt date the Fall of 2007. The ideal situation is to give beardless iris a full three years of growth. We will note receipt dates in the Convention catalog. We will accept either Spring or Fall shipment.

Spring Shipments – until May 15

Spring 2006

Spring 2007

Fall Shipments – until September 15

Fall 2006

Fall 2007

### **Guest Iris Registrar:**

Barbara Sautner

2100 W. 106th St.

Bloomington, MN.44431-3418

bjstaxservice@aol.com

952/884-8254

### **Photographs:**

We are requesting the hybridizer send along a 35mm color slide or e-mail a digital photo in .jpg format to the Guest Iris Registrar. These should be clearly marked with the name or seedling number of the iris.

### **Guidelines:**

Minimum of three, up to five divisions of each variety may be shipped.



More divisions allow us to display a variety in a number of garden situations.

The name or seedling number of the variety must be clearly marked on each division. The following information for each plant must be supplied on a packing list:

Hybridizer's name

Name or seedling number

Category/type

Height, color, description, bloom season (E,M,L applicable to the Siberian iris season)

Year of introduction (if applicable)

Foreign submissions must include phytosanitary certification.

If a guest iris is named subsequent to shipping, the hybridizer is responsible to notify the Guest Iris Chair no later than 03/01/2009.

### **Disposition of Guest Iris:**

We request the hybridizer to include information regarding the disposition of their iris after the convention.

### **Alternatives:**

Destruction of iris.

Return to the hybridizer

Donation of the iris to ISM for permanent display or dispersal in auction or as they deem necessary.

We hope hybridizers will select the third alternative, but we will honor all requests.

The absence of instructions will automatically indicate the third alternative.

The convention committee and tour garden owners will follow the code of ethics as printed in the AIS Convention Handbook.

Only officially submitted guest iris will appear in the Siberian-Species Convention booklet.



# HOW SIBERIANS FOUND A HOME IN NORTH CAROLINA

*by Susan Grigg, Raleigh, North Carolina*

This is a love story about a family living in North Carolina who knew and admired the bearded irises growing in their grandparents' homes but who had yet to discover another treasure, the Siberian iris.

As new homeowners, after the initial infection by the Iris Virus, we began to search for iris plants to grace our small garden. Friends and relatives gave us our first tall bearded irises and among the gift plants was something different, an iris called **Caesar's Brother**. Since I had been an English teacher before marriage, and I am a fan of Shakespeare, the name appealed to me. Little did I suspect that my life would change after years of living with that Siberian!

Caesar's Bro' settled in our landscape at the corner of our front walkway and seemed to enjoy his stay for 28 years. Our children picked his blossoms and jumped across him before he reached full height. Our cats made a cozy nest in his middle and took long naps. My husband Glenn and I took photos of his development and learned how to care for him. Then came the day when we were moving to a new home with more space for gardening. What would we do with our beloved Siberian?

I think Caesar's Bro' must have cried a little as we attacked him with a shovel and then with a pickaxe. "It's for your own good," we reassured him. We moved most of our prized tall bearded irises and our Siberian to the new garden plot and they loved the new spacious beds. As all of you know, growing just a few irises cannot cure the Iris Virus. When catalogues arrive, when convention gardens are visited, the virus grows stronger and the only way to ease the symptoms is to buy more irises. We thought that our Siberian needed some friends of his own variety, so we bought several: **Flight of Butterflies** ( J. Witt '72). **Showdown** (Varner '75), **Butter and Sugar** (McEwen '76) and **Star Cluster** (Hager '79).

It was important to remember that these beardless Siberians were to be planted in the cool fall here in North Carolina after the heat of our summer had passed. They also needed to be kept moist before planting and arrived from the growers with the roots wrapped in wet newspaper and secured in plastic. We were learning to enrich our clay soil with organic material, fertilize in early spring and after bloom with a balanced fertilizer.

We mulched all the Siberians and made sure they had adequate moisture and we were rewarded with lovely blooms and attractive foliage. Feeling that Caesar's Bro' needed some female companionship, we planted **Lady Vanessa** (Hollingworth '86) and her lady-in-waiting, **Isabelle** (B. Warburton '89).

In the past few years, we've welcomed more Siberian beauties into our lives. This past bloom season, we enjoyed the dark royal-purple ruffles of **Over in Gloryland** (Hollingworth '93) and the pale lavender of **Mesa Pearl** (Bauer/Coble '94). **Roaring Jelly** (Schafer/Sacks '92) was a vision in lavender-gray and maroon while **Shaker's Prayer** (C. Warner '90) swayed in the May breeze catching everyone's attention. This year we are anticipating the bloom of our newest residents: **Ama-No-Hane** (Shimizu '00) and **Roju Oji** (Shimizu '02); **Crimson Cloisonné** (Aitken '05) and **Sunfisher** (Schafer/Sacks '03). There are also three of Mike Locatell's seedlings that we're looking forward to seeing for the first time.

Now if I can only keep that **Careless Sally** (Schafer/Sacks '96) away from **Tom Schaefer** (Schafer/Sacks '00).



**DUNLOP & COLE**  
**- SIBERIAN IRISES -**  
*Breeders Since 1993 - Originators - Display Gardens*

WE ARE PLEASED TO OFFER OUR 2006 INTRODUCTIONS

**‘Miss Portland’** (Jeff Dunlop, R. 2005). Sdlg. 96086-1T. SIB (tet.), 30” (76cm), M thru L. Ruffled blue with white signal (RHS 99B). S. ruffled mid-blue veined slightly darker; style arms wide and ruffled, mid-blue with a touch of aqua; F. mid-blue, wide, deeply ruffled with a white signal, gold hafts and a white wire edge. Falls have a pleasing starchy appearance. 2 branches and 4-6 blooms. T7 87/77-1: (white McEwen seedling) X Chatter Box Belle. Wonderful new ruffled blue with lots of charm and character. Our greetings and best wishes from Portland, Maine. Dunlop & Cole, Fieldstone Gardens, 2006. \$45.

**‘Joyce Cole’** (Dean Cole, R. 2005). Sdlg. DC 98-68-4. SIB (tet.), 30” (76cm), M thru L. Ruffled white with green veins and excellent foliage. S. wide white with light ruffling; style arms white with cream influence at ribs; F. ruffled wide white with prominent green veins blending to green and yellow hafts. 1 branch and 3 to 4 flowers. Tiffany Lass X Shall We Dance. A fine new ruffled white with superb upright foliage named for Dean’s Mother. The flower and lady, both absolute gems. Dunlop & Cole, Fieldstone Gardens, 2006. \$45.

**‘Tranquility Base’** (Jeff Dunlop, R. 2005). Sdlg. 95099-5T. SIB (tet.), 32” (81cm), M thru L. Deep violet near self (RHS 88A). S. deep violet with darker veins at center and fine veining; style arms slightly lighter than standards with aqua highlights; F. deep violet with slightly darker veins and ruffling toward center of falls. Darker at signal area with interesting brown hafts. Lovely quiet flowers, having the stately presence of broad shouldered falls. Garden worthy with exceptional foliage. 1+ branch and 3-4 buds. Tiffany Lass X T7 87/80-1: (wine red McEwen seedling). Dunlop & Cole, Fieldstone Gardens, 2006. \$40.

*These fine Siberian Irises are available from Fieldstone Gardens here in Maine. Visit them at **[www.FieldstoneGardens.com](http://www.FieldstoneGardens.com)**. See the newest seedlings June 5 thru July 10, afternoons, at our gardens in North Windham and Gorham, Maine.*

Our introductions are Guests at the 2006 Conventions in Portland, Oregon, and may be seen at: Aitken’s Garden, Collier Garden, Mount Pleasant Iris Farm, Mountain View Iris Gardens, Wildwood Gardens, Chehalem Gardens and the Reid Garden.

We wish for perfect conditions for the Societies and attendees of the Conventions.

*Miss Portland*



*Joyce Cole*



*Tranquility Base*



# FROM SIBERSPACE:

## *Spraying for weed control and more.....*

*by Sibrob Members*

I use Roundup to weed most of the iris beds. Since I have a small commercial garden, that amounts to about 30,000 square feet. I use a lot of care by having a low pressure in the tank and feather the spray trigger. I will even spray the interior of a clump. When I use 2 oz per gallon, I have some distorted blooms. When I use 3 oz per gallon, I have more distorted blooms and more distortion to the bloom. This year with most usage at 3 oz/gl, I probably had 100 to 150 distorted blooms on 1200 clumps. There was no obvious damage to the foliage. Weed control has been fair to excellent. I have dual 2 ft spaced rows with separation between clumps and 5 ft aisles.

I advised another garden owner who was having major weed problems on about 2 acres of irises to start using Roundup. He has inadequate separation between clumps in single rows with inadequate aisles. I don't believe he used the same spray control that I use. He had significant damage to the foliage. The damage was severe enough that the rhizomes were discarded. The cultivars were of minimal commercial value so no attempt was made to grow them a second year.

I have seen other gardens that were badly damaged by herbicides when label instructions were not followed. My advise would be to follow label instructions and treat a test bed for a year or two before making any drastic changes to a herbicide use program.

*Harold Peters*

~~~~~

Friends own a greenhouse complex and sell iris they pot up. The boys gave about 6 pots a full dose of commercial Roundup. The father was upset.

I said I'll take them home and baby them because we just had a discussion about the affects of Roundup. One year later I'm returning 5 pots of Wabash and Goodwill Messenger to him with no ill affects. I kept a pot of Goodwill Messenger as I didn't have it. A year later it died of soft rot. There you go, invincible to Roundup and a patsy for rot.

*Al Bullock*

~~~~~

Like a lot of other people we use Roundup (2.5 oz/gallon) all year round in the Siberian beds (though always trying to avoid direct contact of the spray with the irises). Every year a handful of flowers show the pale



colors and changed form typical of Roundup injury, but I've never seen the vegetative parts of a plant much affected or had one die, so there is some degree of resistance which is a blessing. Here are a few more observations on herbicides and Siberians:

Snapshot (2.5% granular) is a pre-emergent herbicide mixture - a sort of improved version of Treflan. We use it very widely around the new seedlings and it has never caused any problem. As long as it is rained or hoed in soon after application, it does a great job. Poast (common name; sethoxydim) is a grass-selective compound. I never saw any problems with Siberians oversprayed with this. However, a few years back I switched to a closely-related compound Select (clethodim) because it is supposed to control annual bluegrass which Poast doesn't. This was a mini-disaster. Sprayed on the plants while they had bloom stalks, it blasted every bud - they just dried and withered. Fortunately it was used on a very limited area. The plants themselves weren't killed, but it was a nasty surprise and the last time I used Select. Not entirely grass-specific, whatever the claims! The last grass-specific herbicide that we use now as a primary compound is Fusillade II (fluazifop-P-butyl). This seems to be pretty much harmless to irises, though I haven't sprayed them when in bloom. Lastly, a really useful compound is Lontrel (Stinger; common name: clopyralid) which is a plant hormone analog like 2,4-D. It works wonders on thistles and compositae like dandelions and ragweed and a few other significant weeds. It doesn't seem to harm the irises but it does cause twisting of the flower stems so it shouldn't be used when they are in bloom. With care, you can get just about every weed with these compounds. But, these mixed experiences do clearly show that the flowers are often the most sensitive part of the plant and that, as Harold says, some initial tests on a limited area before believing anything you read or are told can save some grief. It would be interesting to find out how other people with large plantings handle weeds. Weed pressure is relentless and makes most of the work in growing Siberians for us.

*Bob Hollingworth*

~~~~~

Bob,

Thanks for all the information. Living further south, we deal with nut sedge, which is not affected by any of the compounds you mentioned. I use Manage (Monsanto), which is labeled for use in turf grasses. Generally, the sedges are warm weather weeds and the first application is long after Siberian bloom.

*Dennis Hager*

~~~~~

Bob,

Great report. Weeds are what forced me to decide to move and reduce the number of Siberians. I have two large iris planting areas. One is flat as it is on the top of the hill. The other area is on the hillside with a 20% to 30% slope. The Siberians were in the hillside area. The Siberians require more hand work than the bearded irises. Standing below the row with my ankles at a severe angle was better for my back but terrible for my feet. As a consequence the Siberian row never got finished.

*Harold Peters*

~~~~~

I can add a few other things to this thread about herbicides. There are many different formulations of Roundup. They are in different strengths, for the most part, and some have spreader stickers and some don't. There is also the new Roundup "Fast Kill Foam", knocking plants to the ground in 24 hours. I have used Roundup Pro professionally for many years. It is quite inexpensive and quite non selective. I mix it at the rate of 2.75 oz per gallon. At that rate it does kill or set back almost all weeds, and SIs and JIs, as well as two types of nut sedge, but not the tough one, purple. I strongly suggest not using this formulation at this strength on your SIs and JIs, as well as Japanese roof, and most bearded of modern form. It does not kill Pseudacorus, but does ruin the foliage. Another great pre-emergent for Iris, ( one that actually lists Iris on the label) is Surflan, quite effective on some tough annuals. It is closely related to Treflan. As to Snapshot, I don't have a label at hand, but I doubt that it is listed for Iris as half of its active ingredient, Gallery, does not list it as safe to apply. This doesn't mean that it doesn't work, it means that the label doesn't list it, and it is a violation of federal law to apply it to plants not listed. This mostly affects those with Pesticide Applicator licenses.

Back to Roundup. Very low rates of Roundup will frequently kill weeds in ornamental plants, and the plants will survive, but be damaged for the short term. Iris and Daylilies come to mind. At the very low rates, the weeds take weeks to die, typically.

*Jim Murphy*

~~~~~

Lots of good comments and experience in this thread. but I'd like to have a chance to "revise and extend my remarks" as Congress puts it. Jim, regarding Snapshot 2.5 granular, it is registered for use on landscape and field grown ornamentals including Iris siberica (so spelled), so I reckon we are legal. But by no means all herbicides for ornamentals (or other



pesticides) specifically list iris on the label. The closest Lontrel comes is “lilies”. I tried to get a program going at one time to add irises to some of these newer pesticide labels (we run such a program for USDA at Michigan State University) but no one in the commercial production business seemed too interested, so it never got off the ground. Such off-label use isn’t a major concern for EPA or the local Departments of Agriculture I guess, and a lot of it goes on. Still it would be wise to make it clear in any article on herbicide use that the label is the law and the comments don’t constitute an official recommendation for use. Also, Harold, solarization (solar heating of the soil under a transparent cover) often works well in California with all that hot sun, but not so well in northern latitudes where the sun’s intensity (and fitfulness) mean the soil may never get heated up far enough to take out the pathogens and weed seeds. Yet one more reason to move to California I guess.

*Bob Hollingworth*

~~~~~

A few tricks to better control where your herbicide goes and minimize overspray. Cut the bottom out of a gallon milk jug or bleach bottle. Stick the spray nozzle in through the top about two inches in and attach. This is the perfect application for duct tape. Place the jug just above the offensive weeds and spray away. This makes a shield so you can spray right next to the good plant without dousing it. Another trick for spot non-spray applications is to apply the herbicide with a paint brush. Or use a paint roller with a cheap foam roller on it and just roll it if you have a little larger area. Put a latex or rubber glove on and then a cotton glove over that. Stick the cotton glove into the herbicide and then swipe or rub your hand through the offensive weeds.

*Karl Miller*

~~~~~

Harold, so were you able to totally eradicate the bindweed using your pie-pans of Roundup? Or did you just slow it down to where it was manageable to hand weed? I’m keenly interested in this since I have a mixed perennial bed that has been taken over by bindweed. We also had bindweed in a grape arbor and my husband sprayed the bindweed with 24D and then mulched heavily around the grapes. It took the majority of the bindweed out, but there are still a few tentacles that try to re-establish themselves and so hand weeding is necessary. This method has been discussed in the Weeds forum over on Gardenweb and it’s been reported with differing results. I’m curious to your results.

*Diann in Iowa*

~~~~~

I did not remember last year's results so I went out to check the area. There was no bind weed in the area so it must have worked to eradication. I know how much of a problem bind weed can be so I must have started control shortly after noticing the problem. I was using the pie pan method to take out a wisteria intermingled with star jasmine so I did not have to come up with the technique for the bind weed. I was not successful on the wisteria.

*Harold Peters*

~~~~~

Harold, thank you for the prompt response. I guess I'll go find some empty milk jugs and mix up some round up and stick the ends in the solution and let it have a nice Round-up cocktail. Thanks again for the prompt response.

*Diann in IA*

~~~~~

I was going to suggest a little discussion of sprayers; this is good! Does any one else have anything to add about them?

*Ken Walkup*

~~~~~

Since you mentioned sprayers, I will take advantage to vent. The "Roundup" sprayer is a two gallon hand held. With 1 gallon of mix, I can get about 10 feet of spraying and my back is painfully telling me quit now or else. I also have a 4 gallon backpack sprayer. I can load it with 4 gallons of solution and spray the entire 14,000 square feet Hillside area without a twitch of pain. Does the fogging nozzle from the "Roundup" sprayer fit on backpack sprayer? No, the threads and size are different. I had a lot more distorted flowers as a result.

*Harold Peters*

~~~~~

The weeds died pretty quickly; the irises showed little effect at first, then most of the foliage turned brown. But after about 6 weeks, it looks like they would recover if I don't dig them. My conclusion is that Siberian hybrids aren't quite a Roundup-ready crop, but are pretty tolerant of it.

You have conducted an interesting and valuable experiment. What is missing is an answer to the question, "Were the subject Siberians in active growth at the time of spraying?" And, "Is there a way one might discern the degree of active growth if existing?"

Apparently several (maybe most) iris species are fairly tolerant of Roundup. In the TB group the most obvious detriment is bloom distortion

(there remains some reservation concerning retardation of increase here) when over-spray contacts the plant at anytime other than summer dormancy and even then sometimes. Spring sprayin' nearly, but not always, causes bloom distortion from over-spray contact. <definitely not a controlled experiment here and mostly gut feeling>. Recent discussions on the species group provided some valuable input on Roundup tolerance of some species.

We need more work (science) such as yours under controlled conditions to determine what, why, where, and when for all iris species. Thanks for valuable information.

*Bill Burleson*

~~~~~  
This morning I was was reading the June '04 issue of *The New Zealand Iris Society Bulletin* and, in a report from the Albany, N.Z. group, Mary King wrote: "Public plantings made in Kell Park of water-loving iris are largely flourishing, despite some lack of knowledge by some Council employees! All our Siberians were mowed to the ground in the Spring {our Fall in the Northern Hemisphere}, but new growth has now returned."

One of my least favorite jobs is cutting back the Sibbs in the Fall.....mowing sounds far easier. Anybody ever do it outside of Albany, N.Z.? I know Dana Borglum torches his Sibbs....I guess the same outcome?

*Ellen Gallagher*

~~~~~  
We mow ours (all 1-2 acres) every November. It's hard on the mower and the mower deck needs to be rebuilt every two or three years, but doing it by hand is an even less attractive option. We also get rid of reject seedlings by continually mowing them. It's amazing how long they can stand this and still try to regrow. In fact a number of them still bloomed this year on tiny two inch foliage after a year of mowing close to the ground. It seems heartless to cut down these poor little things trying so hard to survive, but is Roundup kinder?

*Bob Hollingworth*

~~~~~  
Francis Rogers has modified a mower and he cuts his TBs with it. Put larger wheels on it so he can regulate the height.

*Char Holte*

After reading some earlier comments about Roundup on irises, I tried an experiment. I sprayed a couple of reject Siberian hybrid seedlings with Roundup just to see how much effect it would have. I also sprayed some nearby weeds. The weeds died pretty quickly; the irises showed little effect at first, then most of the foliage turned brown. But after about 6 weeks, it looks like they would recover if I don't dig them. My conclusion is that Siberian hybrids aren't quite a Roundup-ready crop, but are pretty tolerant of it.

*Ken Walkup*

~~~~~

I work as a horticulturist, and have many very large SI and JI plantings. In the fall, I use a 1000 lb 6' wide mower to cut them to the ground. I have no problems with this, but I do not ride over the crowns. Tags would be a problem, but mapping ahead of time is a good solution.

*Jim Murphy*

~~~~~

We use a hedge trimmer attachment on a weed eater then just rake the leaves out of the beds.

*Greg McCullough*

~~~~~

Thanks. I will probably go with a 'weed whacker' since I have almost all my 120 Sibs. in mixed borders not in rows. There is only one place where my husband could mow about 20 Sibs. since they sort of hang off the island bed. (He knows nothing about this since he is on a week-long business trip - I will spring it on him next Sat.).

Greg, I will have to get a more powerful 'weed eater' with a hedge attachment. Our little weed whacker won't cut it, literally.

I am so happy to be free of the 'knife'. Thank you, guys!

*Ellen Gallagher*

~~~~~

I have 4 Stihl weed eaters (2 FS85 and 2 FS110) and really like them. The FS85's are about 10 years old with a lot of use and still run well. You can also get a small chainsaw attachment that's very handy for those hard to reach limbs.

*Greg McCullough*

~~~~~

# **“SIBERIANS SAVE WOMAN’S LIFE”**

**Printed in The Berlin, New Hampshire Daily Sun on June 8, 2004**

This was written by Harold R. Sullivan of Manchester, NH, son of Mrs. Olive Sullivan of Berlin, New Hampshire.

“On Thursday, May 27th my mother, Olive Sullivan, was working in her garden at her home at 2143 Riverside Drive in Berlin. About 10:30 a.m. she suddenly was sucked into a sinkhole and was buried chest deep. An old septic tank no longer in use collapsed from all the rain. She could easily have been buried alive had she not grabbed onto some Siberian irises and held herself from going deeper.

For an hour this 87 year old woman screamed for help. Finally, her “guardian angels” arrived. They were three men working next door and heard her cries for help. They came over, saw the situation and despite the danger to themselves, they grabbed my mother’s arms and pulled her out. They could have also been sucked into the sinkhole and buried.

One of the men then volunteered to use his equipment to get some crushed stone and fill the hole. He did this for my mother and refused any payment.

Steve, Jim and Willie deserve some public recognition. They are heroes to my mother and my family. She was here to celebrate her 88th birthday largely because of the efforts of these gentlemen.

~~~~~

There is more to the letter but that is the gist of it. I visited Mrs. Sullivan (who lives on my street) because I wanted to see the exact place it happened. She grabbed onto the Siberians since “they are a devil to divide and they have strong, deep roots”.

Ellen Gallagher

p.s. Mrs. Sullivan’s garden boot came off in the cold, icy water of the sinkhole ...she did not go back and retrieve it.

# 2006 SIBERIAN IRIS DISPLAY GARDENS

*by Bill Dougherty, Minnesota*

Again this year Bill Smoot and I will co-chair the Siberian Display Garden (SDG) Program. The goal of the SDG program is to promote Siberians in our gardens.

SDG owners grow and maintain a quality collection of Siberian Iris and are willing to open their gardens to show and educate the gardening public about the qualities and culture of our cherished iris. Where better to praise the virtues of Siberian iris than in the garden? Not only does the gardening public have a place to examine well-grown Siberians but AIS members and Judges could use SDGs to examine the latest hybrids and introductions if available.

## **Qualifications**

- (1) SDG owners must be members of SSI.
- (2) They are willing to have their addresses and contact information publicized.
- (3) They should have a collection of well-grown Siberians and be willing to tell others about their culture.

## **The Program**

- \* Program enrollment will be in November when new gardens will be enlisted. (Enrollment is closed for 2006)
- \* Existing garden owners will complete a yearly activity report and determine if they wish to continue in the program.
- \* SDGs will be published in the Spring TSI, the SSI website, new SSI membership material and other SSI publicity opportunities. SDG owners will receive SSI membership brochure's culture sheets, annual questionnaire and activity report.
- \* Annual publication of the member list will detail the contact name, address, telephone numbers, and e-mail addresses. Visits will be appointment only arranged with the garden owner. **Please call or e-mail in advance.**

We have talked to some commercial growers and they have shown interest in providing a small discount to SDG owners. Commercial growers that wish to provide a discount to SDG members contact either co-chair listed below. We are eager to answer questions or respond to comments.

William Smoot  
213 Derby Road  
Portsmouth, VA 23702  
Phone: (757) 393-4617  
**Billsmoot@earthlink.net**

William Dougherty  
7420 Concerto Curve  
Fridley, MN 55432  
Phone: (763) 785-2543  
**Wmcdougherty@cs.com**

---

### ***Display Gardens:***

#### **Region 1 (CT,MA,ME,NH,RI,VT)**

Dean O. Cole  
21C Great Falls Road  
Gorham, ME 04038  
(207)892-5248  
**doc070352@aol.com**  
Bloom: 12 – 27 June

Jeff & Joyce Dunlop  
24 Basin Road  
North Windham, ME 04062  
(207)892-4057  
Bloom: 5 – 20 June  
Afternoons by Appointment!

Earthheart Gardens  
Sharon Whitney  
1709 Harpswell Neck Rd.  
Harpswell, ME 04079-3303  
Phone (207)833-6905 or e-mail for  
an appointment  
**earthheart@gwi.net**  
Bloom: Early to Late June  
Open Garden Day: 1:00-5:00,  
Sunday, June 22, 2003

John W. White  
193 Jackson Hill Road  
Minot, ME 04258-4413  
(207)345-9532  
**Tedwhite1@aol.com**  
Bloom: Mid-June/Mid-July

Anne & Dick Jarobski,  
Reflections  
17 Chestnut Street  
West Newbury, MA 01985  
(978)363-2282  
Bloom: Mid-June – Mid-July

Andrew and Ellen Gallagher  
Granite Gardens  
1689 Main St.  
Berlin, NH 03570  
(603)752-5731  
**ellengalla@yahoo.com**  
Bloom: Mid-June to Early July

Philip W. Cook  
Poker Hill Gardens  
PO Box 338  
Underhill, VT 05489  
(802)899-9928  
**phgarden@together.net**  
Bloom: Early to Late June

**Region 2 (New York)**

Dana and Sylvia Borglum  
Borglum's Iris Gardens  
2202 Austin Rd.  
Geneva, NY 14456-9118  
(716)526-6729  
**Sylborg@aol.com**  
Bloom: June

Kathy Guest  
494 North Street  
E. Aurora, NY 14052-1446  
(716)655-1762  
**Irisborer@aol.com**  
Bloom: Early to Mid-June

Robert E. Kontak  
207 Hinsdale Road  
Camillus, NY 13031  
(315)487-0284  
**rkontak@TWCNY.rr.com**  
Bloom: June

**Region 4 (MD,DC,VA,WY,NC)**

Draycott Gardens  
Carol Warner  
16815 Falls Road  
Upperco, MD 21155  
(410)374-4788  
**draycott@qis.net**  
Bloom: May 20 – 10 June

Libby Cross  
8907 Potts Creek Road  
Covington, VA 24426  
(540)747-2123  
**LibCROSS@aol.com**  
Bloom: Early May to Early June

Bill Smoot  
213 Derby Road  
Portsmouth, VA 23702  
(757) 393-4617  
**BillSmoot@earthlink.net**  
Bloom: Early May – Early June

Nicholls Gardens  
Diana Nicholls  
4724 Angus Drive  
Gainesville, VA 20155-1217  
(703)754-9623  
**nichollsgardens@juno.com**  
Bloom: May

E. Roy Epperson  
Kirklee Iris and Hosta Garden  
1115 Delk Drive  
High Point, NC 27262-3419  
(336) 883-9677  
**kirklee@triad.rr.com**  
Bloom: May

**Region 5 (SC,GA,FL,PR)**

Marshall Goforth  
837 S. Green River Road  
Gaffney, SC 29341  
(864) 487-4082  
Bloom: Late April thru May

**Region 6 (OH,IN,MI)**

Richard Cryberg  
9531 Robinson Road  
Chardon, OH 44024  
(440)285-3287  
**ei048@cleveland.freenet.edu**  
Bloom: Early June



Tony and Dorothy Willott  
26231 Shaker Blvd.  
Beachwood, OH 44122-7111  
(216) 831-8662

**DWiris@aol.com**

Bloom: June

Anna Mae Miller  
1700 Bronson Way, Apt. 155  
Kalamazoo, MI 49009  
(269) 349-5934

**Irisquilt@aol.com**

Bloom: Late May – Mid-June

Donald R. Sorensen  
5000 Eleven Mile Road  
Rockford, MI 49341  
(616) 866-1493  
Bloom: Mid-May – Mid-June

Ensata Gardens  
Bob Bauer & John Coble  
9823 E. Michigan Ave.  
Galesburg, MI 49053-9756  
(269)665-7500  
**Ensata@aol.com**  
Bloom: Mid-May – Mid-June

Bob & Judy Hollingworth  
Windwood Gardens  
124 Sherwood Rd. East  
Williamston, MI 48895  
(517)349-8121  
**cyberiris@cablespeed.com**  
Bloom: Early to Mid-June

### **Region 7 (TN,KY)**

Iris City Gardens  
502 Brighton Place  
Nashville, TN 37205  
(800)934-4747  
**icity@msn.com**  
Bloom: May

Jim and Janet Wilson  
2303 Stoneybrook Court  
LaGrange, KY 40031  
(502) 222-2210

**wilsonjh@insightbb.com**

Bloom: May

### **Region 8 (MN,WI)**

Dave Campbell  
Borbeleta Gardens, Inc.  
15980 Canby Avenue  
Faribault, MN 55021  
(507) 334-2807  
Bloom: Mid-May – Late June

William Dougherty  
7420 Concerto Curve  
Fridley, MN 55432  
Phone: (763) 785-2543  
**Wmcdougherty@cs.com**  
Bloom: June

Holly Lane Gardens  
Jack and Jan Worel  
10930 Holly Lane  
Osseo, MN 55369  
(763) 420-4876, **jworel@aol.com**

### **Region 9 (IL)**

Lou Emmons  
7805 Tryon Grove Road  
Richmond, IL 60071  
(815) 678-4383  
Bloom: Mid - Late June

### **Region 11 (ID,MT,WY)**

Ken & Carol Coleman  
C. Iris On Pond  
2606 S. Pond  
Boise, ID 83705  
(208)336-3052, **ciris@qwest.net**  
Bloom: June

Angelique Monet Violette  
228 Mud Lake Trail  
Polson, MT 59860  
(406)883-5535  
**aviolet@digisys.net**  
Bloom: June

**Region 13 (AK,OR,WA)**

Fran Hawk  
518 NE 88th Street  
Seattle, WA 98103  
(206)633-4240  
Bloom: Mid-May – Mid-June

**Aitken's Salmon Creek Garden**

(Terry & Barbara)  
608 NW 119 St.  
Vancouver, WA 98685  
(360)573 4472

**Aitken@flowerfantasy.net**

www.flowerfantasy.net

Bloom = mid to late May with  
rebloom in June and July. We  
have a new Siberian planting  
with a north exposure which may  
extend our bloom well into June.

Tom and Ellen Abrego  
Chehalem Gardens  
19105 NE Trunk Rd.  
Dundee, OR 97115  
(503)538-8920, **BHUZ@aol.com**  
Bloom: May

**Region 14 (HI,N.CA,NV)**

Jay and Terri Hudson  
The Iris Gallery  
33450 Little Valley Road  
Fort Bragg, CA 95437  
(707)964-3907  
**irishud@earthlink.net**  
Bloom: May

Harold Peters  
2048 Hickok Road  
El Dorado Hills, CA 95762-974  
(916)933-3804  
**harold@directcon.net**  
Bloom: First two weeks of May

Debora Totoonchie  
13128 Owl Creek RD  
Nevada City, CA 95959  
(530)477-2956, **Totoo@jps.net**  
Bloom: usually June  
(sometimes late May)

**Region 16 (CANADA)**

Leroy Kriese  
PO Box 1135  
Vernon, BC Canada V1T 6N4  
(250)766-1394 **ambrosia@silks.net**  
Bloom: May & June -  
Peak early June

Jean-Marc Boileau  
Box 592, Deschenes Road  
Chelsea, Quebec J0X 1N0 Canada  
(819)827-2592,  
**mboileau@uottawa.ca**  
Bloom: Early to Mid-June

Erin Mills Iris Garden/  
Chris Hollinshead  
3070 Windwood Drive  
Mississauga, Ontario, Canada  
L5N 2K3  
(905) 567-8545  
**erin-mills@home.com**  
www.members.home.net/erin-mills  
Bloom: Early to Mid-June

Diana Louis  
282 Waratah Ave.  
Newmarket, Ontario, Canada L3Y 5J2  
(905)853-5209,  
**dlouis@dynamicro.on.ca**  
Bloom: Mid-June

Henry Pauls  
49575 Elk View Road  
Chilliwack, BC  
Canada V4Z 1E8  
(604)858-9549  
Bloom: May 15 – July 1

Ted and Sonja Baker  
Baker's Gardens  
185 Furness Road  
Salt Spring Island, BC V8K 1Z7  
Canada  
(250)653-4430  
**tedebaker@canada.com**  
Bloom: May 25 - June 15

#### **Region 17 (TX)**

Diana Winship  
2120 Oak Brook Drive  
Richardson, TX 75081  
(972)234-5742  
**mikesmom@ix.netcdom.com**  
Bloom: Late May thru June

#### **Region 18 (KS,MO)**

Gormley Greenery  
Tom, Rita and Kevin Gormley  
6717 Martha Drive  
Cedar Hill, MO 63016  
(636)273-7435  
**ThomasPGormley@aol.com**  
Bloom: May

Jim & Doris Loveland  
305 Fiedler Lane  
Fenton, MO 63026

(314)349-4977  
**IRISROT@aol.com**  
Bloom: early to late May  
  
Richard & Barbara Nicodemus  
Nicodemus Iris Garden  
Rt. 1, Box 297  
Buffalo, MO 65622  
(417)345-8697  
Bloom: Mid-May thru June

#### **Region 20 (CO)**

Lynda D. Love  
4900 E. Dartmouth Ave.  
Denver, CO 80222  
(303)757-1750  
**Rxiris@comcast.net**  
Bloom: First two weeks of June

#### **Region 21 (IA,NE,ND,SD)**

Arnold & Carol Koekkoek  
38 7th Street, NE  
Sioux Center, IA 51250  
(712)722-0724  
**koekkoek@mtcnet.net**  
Bloom: Last week of May –  
Mid June

Duretta Niemeyer  
813 SE Trilein Drive  
Ankeny, IA 50021  
(515) 964-7830  
Bloom: Last week of May –  
Mid-June

Barrett & Lynn Stoll  
Walnut Hill Gardens  
999 310th St.  
Atalissa, IA 52720  
(319)946-3471  
**walnuthl@netins.net**  
Bloom: 20 May – 10 June

# THE AMERICAN IRIS SOCIETY

## 2006 PHOTO CONTEST

*Submitted by Kitty Loberg*

Share and present your most stunning, breathtaking pictures of irises, gardens, and people involved with irises. This contest is open to everyone and is free to enter. The winning photo of each category will be published in the AIS Bulletin and on the AIS web site. **The winner of each category will receive a 2006 introduction from a Region 13 hybridizer. The winner of each category will also receive a single annual membership or annual membership extension to AIS.** Winners who are AIS life members will receive an annual membership in an AIS Section of their choice. Runner ups of each category will receive a 2004-2005 introduction.

### **How to Enter:**

Simply fill out the <http://photoawards.com/04/contests/IPA-EntryForm-2004.pdf> entry form and send it with your photos to AIS at the address below. You may submit up to five photos in this year's contest. The deadline for submissions to the 2006 Photo Contest is **August 31, 2006.**

Entries will be selected and judged in six (6) categories:

1. Irises used in landscaping.
2. Irises in the garden.
3. Irises with a person or people.
4. Close up of an iris or irises.
5. Photos of events or shows (including arrangements).
6. Youth, any photo with irises.

Please do not send any photo smaller than 4 x 6 inches, nor larger than 5 1/2 x 8 1/2 (half page). If you are using a digital camera, it is suggested that you take your photos in 360dpi or higher resolution, and we ask that you print and submit your photos on photo paper. Please avoid writing or labeling on the back of the photo, unless to identify a variety or person.

A panel of three judges will judge photos received and their decisions will be final. At the discretion of the judges, photos not selected in the current contest may be held for further consideration in future contests. Please provide AIS with a self-addressed stamped envelope if you want the photos returned. Photos will otherwise not be returned and may be destroyed when not selected.

### **Where to send your photos and entry:**

The American Iris Society Photo Contest, c/o Kitty Loberg, 1900 Mountain View Lane, Redwood Valley, CA 95470. Send inquiries to [loberg@adelphia.net](mailto:loberg@adelphia.net).

## **Entry Form:**

Photo caption names and names of persons in photos, if any (for reference purposes)

#1 \_\_\_\_\_

#2 \_\_\_\_\_

#3 \_\_\_\_\_

#4 \_\_\_\_\_

#5 \_\_\_\_\_

Youth: If this is a **youth** entry, please tell us your age: \_\_\_\_\_

I am the person who took the photographs enclosed, and I have not assigned any of my rights associated with these photographs to any third party. By entering the photo contest I am hereby authorizing The American Iris Society to use winning photographs in publications, in brochures, on the Internet, and for other promotional uses.

Signature \_\_\_\_\_

Date \_\_\_\_\_

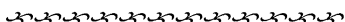
Name \_\_\_\_\_

Address \_\_\_\_\_

City/State/Zip \_\_\_\_\_

Email \_\_\_\_\_ Phone (\_\_\_\_) \_\_\_\_\_

(Receipt of photos will be acknowledged by email. Please provide a SASE if you want a receipt by mail.)





## IRIS CITY GARDENS

Macey and Greg McCullough  
7675 Younger Creek Road  
Primm Springs, TN 38476  
615-799-2179 800-943-IRIS  
[www.iriscitygardens.com](http://www.iriscitygardens.com)  
[email@iriscity@msn.com](mailto:email@iriscity@msn.com)

*Primarily beardless iris; Japanese,  
Siberian, Louisiana and Species*

*We carry antique iris, tall bearded iris  
and stainless steel garden markers.*

Beginning 2007 introductions by Calvin Helsley

Gardens open Wed.-Sun. from mid April through the end of June  
Call, write or email for free catalog

# PAST ISSUES OF TSI AVAILABLE

Past issues of TSI are available for sale as follows:

Spring 1961 through Fall 1970

**cost: \$18.00 (includes shipping at book rate)**

Spring 1971 through Fall 1980

**(Spring '74, '77, Fall '79 will be copies)**

**cost: \$18.00 (includes shipping at book rate)**

Spring 1981 through Fall 1990

**(Spring '85,'87, Fall '85,'86 will be copies)**

**cost: \$18.00 (includes shipping at book rate)**

Spring 1991 through Fall 2000

**(Spring '91 will be a copy)**

**cost: \$18.00 (includes shipping at book rate)**

Complete set Spring 1961 through Fall 2000

**(with copies as listed above)**

**cost: \$60.00 (includes shipping at book rate)**

Single copies

**(from Spring 1961 to the present)**

**cost: \$1.50 per issue (includes shipping by 1st class mail)**

Shipping for overseas members will be at cost.

Please send your order to

Judy Hollingworth

124 E. Sherwood Rd.

Williamston, MI 48895

Check payable to SSI.

## **ADVERTISING RATES**

*A source list for Siberians is printed in the spring issue of TSI at a cost of \$5.00 per listing. Please send your check, made payable to the Society for Siberian Irises, to the editorial office at: 1689 Riverside Dr., Berlin, NH 03570 by February 1st of each year.*

### **OTHER ADVERTISING RATES:**

<b>FULL PAGE COLOR (4" x 7")</b>	<b>\$60.00</b>
<b>FULL PAGE B&amp;W (4" x 7")</b>	<b>50.00</b>
<b>HALF PAGE B&amp;W (4" x 3 1/2")</b>	<b>30.00</b>
<b>1/4 PAGE B&amp;W (4" x 1 1/2")</b>	<b>20.00</b>

(questions write to: ellengalla@yahoo.com)



## **SIBERIAN IRIS SLIDE SETS**

***SLIDE SETS SUITABLE FOR A CLUB PROGRAM,  
INCLUDING A HISTORICAL SET,  
ARE AVAILABLE AT \$10.00 PER RENTAL FROM:***

**BOB HOLLINGWORTH  
124 SHERWOOD RD., EAST  
WILLIAMSTON, MI 48895**

**Please make check payable to R. M. Hollingworth  
E-mail: cyberiris@cablespeed.com**



# COMMERCIAL DIRECTORY

**AITKEN'S SALMON CREEK GARDEN** - Terry & Barbara Aitken

608 NW 119 St., Vancouver, WA 98685

*Aitken@flowerfantasy.net • www.flowerfantasy.net*

\$3.00 for color catalogue

**BAKER'S GARDENS** - Ted Baker

185 Furness Road, Salt Spring Island, BC, V8K 1Z7 Canada

*tedebaker@canada.com*

**BLUE SKY IRIS** - Debbie Gorham & Bob Applegate

19700 NW Adcock Road, Yamhill, OR 97148 • *bluesky@aracnet.com*

**BORGLUM'S IRIS GARDENS** - Dana Borglum

2202 Austin Rd., Geneva, NY 14456-9118 • *Sylborg@aol.com*

**CHUCK CHAPMAN IRIS** - Chuck Chapman

RR#1, 8790 WR124, Guelph, ON, N1H 6H7, Canada

*irischapman@netscape.net*

**DRAYCOTT GARDENS** - Carol Warner

16815 Falls Road, Upperco, Maryland 21155 • *draycott@qis.net*

**EARTHEART GARDENS** - Sharon Whitney

1709 Harpswell Neck Road, Harpswell, ME 04079-3303

*info@EartheartGardens.com • www.eartheartgardens.com*

**ENSATA GARDENS** - Bob Bauer & John Coble

9823 E. Michigan Ave., Galesburg, MI 49053-9756

*Ensata@aol.com • www.ensata.com*

**FIELDSTONE GARDENS, INC.**

55 Quaker Lane Vassalboro, ME 04989-3816

*Sales@FieldstoneGardens.com • www.FieldstoneGardens.com*

**IRIS CITY GARDENS** - Greg & Macey McCullough

7675 Younger Creek Rd., Primm Springs, TN 38478

*icity@msn.com • www.iriscitygardens.com*

**JOE PYE WEED'S GARDEN** - Jan Sacks & Marty Schafer

337 Acton St., Carlisle, MA 01741

*jpwwflowers@aol.com • www.jpwwflowers.com*

**HAROLD L. STAHL**

8343 Manchester Drive, Grand Blanc, MI 48439

*hlstahly@umich.edu*

**SANS SOUCI NURSERY** - L. Bruce Hornstein

3819 Beatty Road, Monkton, MD 21111

*lbh0251@msn.com • www.irises.com*

**THE IRIS GALLERY** - Jay & Terri Hudson

33450 Little Valley Road, Fort Bragg, CA 95437

*irishud@earthlink.net • www.allthingsiris.com*

**WINDWOOD GARDENS** - Bob & Judy Hollingworth

124 Sherwood Rd. East, Williamston, MI 48895

*cyberiris@cablespeed.com*





# THE SOCIETY FOR SIBERIAN IRISES

*Section of the American Iris Society*

## OFFICERS

---

**President:** E. Roy Epperson  
1115 Delk Drive  
High Point, NC 27262-3419  
(336)883-9677; **kirklee@triad.rr.com**

**1st V.P.:** Judy Hollingworth  
124 Sherwood Rd. E.  
Williamston, MI 48895  
(517)349-8121; **cyberiris@cablespeed.com**

**2nd V.P.** Sandy Ives  
1077 Guertin Avenue  
Ottawa, ON Canada K1H8B3  
(613)521-4597; **rives@rogers.com**

**Secretary:** Lynda Love  
4900 E. Dartmouth Avenue  
Denver, CO 80222-7333  
(303)757-1750; **rxiris@comcast.net**

**Treasurer:** Jim Copeland  
78118 M-40  
Lawton, MI 49065  
(269)624-1968; **Jandjcope@aol.com**

~~~~~

**DIRECTORS:** *Carol Warner* (ex officio)  
16815 Falls Road  
Upperco, MD 21155  
(410)374-4788; **draycott@qis.net**  
*Dave Niswonger* (2007)  
822 Rodney Vista Blvd.  
Cape Girardeau, MO 63501  
(573)334-3383; **capeiris@aol.com**  
*Peter Weixlmann* (2007)  
280 Seneca Creek Road  
West Seneca, NY 14224  
(716)674-6289; **PWeixl@aol.com**  
*Chad Harris* (2007)  
P.O. Box 436  
Washougal, WA 98671-0346  
(360)835-1060; **Chad <dalegrams@prodigy.net>**

*Dana Borghum* (2008)  
2202 Austin Road  
Geneva, NY 14456-9118  
(585)526-6729; **Sylborg@aol.com**  
*Katharine Steele* (2008)  
2121 Sedley Road  
Charlotte, NC 28211  
(704)364-1639; **rdsteele@carolina.rr.com**  
*Ellen Gallagher* (Editor)  
1689 Riverside Drive  
Berlin, NH 03570  
(603)752-5731; **ellengalla@yahoo.com**

## COMMITTEES \_\_\_\_\_

### ***Display Gardens:***

- 1) ***Bill Smoot***, 213 Derby Rd., Portsmouth, VA 23702; (757)393-4617;  
**BillSmoot@earthlink.net**
- 2) ***Bill Dougherty***, 7420 Concerto Curve, Fridley, MN 55432  
(763)785-2543; **Wmcdougherty@cs.com**

### ***Membership:***

***Susan Grigg***, 105 Trotters Ridge Drive, Raleigh, NC 27614-9620  
(919)870-8345; **smgrigg@bellsouth.net**

### ***Nominating Committee:***

- 1) ***Sandy Ives***, 1077 Guertin Ave., Ottawa, ON Canada K1H8B3  
(613)521-4597; **rives@rogers.com**
- 2) ***Anna Mae Miller***, 1700 Bronson Way, Apt. 177, Kalamazoo, MI, 49009  
(269)349-5934; **Irisquilt@aol.com**

***Publicity: Tom Abrego***, 19105 NE Trunk Rd., Dundee, OR 97115  
(503)538-8920; **Bhuz@aol.com**

***Robins: Michael Zarky***, 10963 Citrus Dr., Moorpark, CA 93021;  
**mzarky@earthlink.net**

***Research/Slides: Bob Hollingworth***, (same as Judy Hollingworth)



# Windwood Gardens

## *Introductions for 2006*

### **Graceful Ghost**

Unusual silver-blue  
Dark eyelash pattern  
4-6 buds  
Diploid



### **Swans in Flight**

5-6" flowers  
Lovely form  
3 buds  
Diploid

### **See Ya Later**

Red over yellow effect  
3-6 buds  
Frequently reblooms  
Diploid



**\$35 each; all three for \$90**

**Bob and Judy Hollingworth**

**(517) 349-8121; [cyberiris@cablespeed.com](mailto:cyberiris@cablespeed.com)**

# **New from Marty Schafer and Jan Sacks:**



**BELLS AND WHISTLES** – 28" Early-Midseason \$35.00

*Joe Pye Weed's Garden, 337 Acton Street, Carlisle, MA 01741*  
978-371-0173 • [jpwflowers@aol.com](mailto:jpwflowers@aol.com) • [www.jpwflowers.com](http://www.jpwflowers.com)

*Shipping in April, August or September (\$6 for first 5 plants)*



**WATERFALL WALTZ** – 24" Midseason \$35.00