



The Siberian Iris

Fall 2005

Property of The Society for Siberian Irises



HERE BE DRAGONS
(SCHAFFER/SACKS '03)



AMA-NO-HANE
(SHIMIZU '00)

THE SIBERIAN IRIS

VOLUME 10, NUMBER 10

FALL 2005

President's Message, <i>Roy Epperson</i>	2
Society for Siberian Irises	3
2005 AIS Siberian Awards	4
'Where Eagles Dare', <i>Calvin Helsley</i>	5
Siberian Pop. Poll – 2005	6
2005 Poll Comments, <i>Barbara Schmeider</i>	7
Garden Observations (<i>by members</i>)	8
New Members, <i>Susan Grigg</i>	12
Back to the Future with Siberians, <i>Calvin Helsley</i>	13
2005 AIS Convention:	
Photos at the AIS Convention, <i>Craig Hughes</i>	16 & 17
Theissen Garden, <i>Sandy Ives</i>	18
Mae Porch Garden, <i>Jim & Jill Copeland</i>	19
Hughes and Gormley Garden, <i>Lynda Love</i>	21
Siberian Checklist notice	21
2006 Siberian/species Convention, Will Plotner	
Chehalem Gardens, <i>Tom Abrego</i>	23
Lorena Reid Garden, <i>Lorena Reid</i>	24
Past issues of TSI, <i>Judy Hollingworth</i>	25
Advertising Rates	26
Siberian Iris Slide Sets	26
Nominating Committee Report, <i>Judy Hollingworth</i>	27
SSI Board Meeting, <i>Lynda Love</i>	28
Sibrobo Info, <i>Ellen Gallagher</i>	29
Treasurer's Statement, <i>Jim Copeland</i>	30
SSI Officers, Directors and Committees	31

Front Cover: **Where Eagles Dare**, photo by *Craig Hughes*.

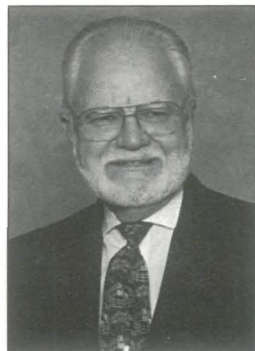
Back Cover: **On Her Toes**, photo by *Sandy Ives*.

Inside front cover, photos by *Craig Hughes*.

Inside back cover, photos by *Ellen Gallagher*.

PRESIDENT'S MESSAGE

This was a good bloom season for Siberian irises. It was especially refreshing to see the *I. typhifolia* hybrids of Dave Niswonger all growing and blooming in the convention tour garden of Mike Theissen. We visited this garden for two visits, two days apart. There was excellent bloom on the second visit. Conventions and mini-conventions give us an excellent opportunity to see and evaluate the newer Siberian cultivars. Catalog descriptions and pictures are good, but there is no substitute for seeing the plant growing and blooming. Be on the lookout for **Dream on Dream** (R. '99, Robert Barker), a silvery white with yellow signal and ruffled flat form; and **Handsome Harry** (see p. 17) (R. '02, Louise Bellagamba), red-purple S, dark red-purple F with brown signal fading brown.



Congratulations to Calvin Helsley for the Morgan-Wood Medal being voted to **Where Eagles Dare**. He presented the general Siberian program at St. Louis and gave us insights into his hybridizing program and some of the names of his introductions.

A visit to the gardens of Richard Cayeux in Gien, France, was one of the highlights of my participation as a judge for Franciris®2005 in late May. He has fields and fields of introduced bearded iris and his selected and reselected seedlings. At his beautifully landscaped home on the grounds of the iris farm were several large clumps of Siberians in full bloom: **Coronation Anthem, Riverdance, Visual Treat, Sweet Surrender, Cambridge** and **Sultan's Ruby**. The showstopper for me, however, was **Dark Aura** (Hewitt '86) A **Spec-X** (from *Iris virginica* and *Iris versicolor*) with dark red foliage in the spring and bloomstalks and bloom spathes that are intense black. The flowers (dark red-violet with light yellow signals) are not impressive, but the foliage and stalks say "WOW".

The highlight of the Siberian world for 2006 will be the mini-convention of Siberians and species to be held on Sunday, May 28, the day following the regular AIS convention in Portland, OR. Each and every one of the beardless guests sent to this convention will be planted in the two tour gardens for the mini-convention: the garden of Ellen and Tom Abrego and the garden of Lorena Reid. For efficiency of time, the regular board

meeting and the general meeting of the Society for Siberian Irises will be held during the regular AIS convention. Sunday, May 28, will be spent visiting these two gardens and will conclude with an awards banquet. All activities are headquartered at the same hotel as the AIS convention. Elsewhere in this issue you will find the registration details for the mini-convention. Please note that due to the inability of the gardens to accommodate buses, registration will be restricted to 300 enthusiasts. (I have already registered and I am #008). Will Plotner is serving as General Chairman and Keith McNames as Registrar.

Work continues on the editing of the *2006 Cumulative Checklist of Siberian Irises* that will be available for purchase at the 2006 Mini-Convention in Portland. I continue to serve as Editor and am making plans to have the 2006 Edition available in print and on CD. Some outdated data will be deleted from the existing edition so do not discard the 2004 or 2005 edition.

Make your plans NOW for the AIS Convention and the Siberian/species mini-convention. The hotel is already filling up!

E. Roy Epperson



THE SOCIETY FOR SIBERIAN IRISES

Membership is open to all AIS members in the United States and Canada and to all iris fanciers elsewhere. Send your dues to the Membership Secretary, Susan Grigg, 105 Trotters Ridge Drive, Raleigh, NC 27614-9620; (919)870-8345; smgrigg@bellsouth.net

Dues: Single Annual	\$ 5.00	Family Annual	\$ 6.00
Single Triennial	13.00	Family Triennial	15.00
Single Life	100.00	Family Life	120.00

The Siberian Iris is published twice yearly by the Society for Siberian Irises, a section of the American Iris Society. The editorial office is at 1689 Riverside Drive, Berlin, NH 03570. Deadlines for copy are Feb. 1st and Sept. 1st, but earlier receipt is appreciated by the Editor. Reprinting is by permission of the author and editor with due acknowledgment.

Society for Siberian irises web page: <http://www.socsib.org/>

2005 SIBERIAN IRIS A.I.S. AWARDS

MORGAN-WOOD MEDAL

100 **WHERE EAGLES DARE** (Calvin Helsley)

Runners-up:

91 **RIVERDANCE** (Marty Schafer & Jan Sacks)

60 **SHIPS ARE SAILING** (Marty Schafer & Jan Sacks)

AWARD OF MERIT

83 **CARMEN JEANNE** (Calvin Helsley)

58 **TOM SCHAEFER** (Marty Schafer & Jan Sacks)

Runners-up:

56 **BUTTER AND CREAM** (Currier McEwen)

46 **SALAMANDER CROSSING** (Marty Schafer & Jan Sacks)

HONORABLE MENTION

57 **EMILY ANNE** (Robert Hollingworth)

42 **RUFFLES AND FLOURISHES** (Robert Hollingworth)

40 **UNCORKED** (Marty Schafer & Jan Sacks)

35 **PLUM FROLIC** (Marty Schafer & Jan Sacks)

33 **BOOK OF SECRETS** (Marty Schafer & Jan Sacks)

32 **SEA OF DREAMS** (Marty Schafer & Jan Sacks)

31 **ROSY BOWS** (Robert Bauer & John Coble)

Runners-up:

29 **TURN A PHRASE** (Marty Schafer & Jan Sacks)

27 **ROKU OJI** (Hiroshi Shimizu)

26 **DOUBLE STANDARDS** (Robert Bauer & John Coble)



BACKGROUND OF 'WHERE EAGLES DARE'

by Calvin Helsley, Mansfield, Missouri

Three branches and terminal, 8 - 9 buds..... No, this isn't a description for a tall bearded iris, but for the 2005 Morgan-Wood Medal recipient, **Where Eagles Dare**. The original selection from the seedling patch was based upon the flower but when lined out and established, the terrific tall stems and high bud count were the clinchers for further selection for introduction.

The basis for most of my Siberian iris hybridizing program goes back to the breeding lines of Steve Varner. One of my earliest crosses was between **White Swirl** and **Showdown**. That cross just resulted in a few seedlings but one of them developed as a nice fragrant, deep blue-violet that was named for my grandmother, **Mabel Coday**. She went on to win the Morgan-Wood Medal in 1991 and proved to be an excellent parent and many of my subsequent introductions have this iris in the background.

I'm not sure of the year but I attended a national AIS convention where Steve gave the program at the Siberian section meeting. During his presentation he showed a slide of seedling S060 which caught my attention. I indicated my interest in this seedling and Steve graciously sent me a plant that fall to use in hybridizing. I made several pollinations with this iris and **Mabel Coday**. Around 200 seedlings resulted from these crosses and many were numbered for future evaluation. Eventually seven from this cross were registered and introduced. 89-3 was one of this group of seedlings and it flowered with deep blue-violet flowers on quite tall stems with 2, sometimes 3, branches and terminal with up to 9 buds. Because of its height, it was named **Where Eagles Dare** and lined out for introduction the following year. When it flowered on newly planted stock, as is usually the case, the stems were very short and the flower rather indistinct. I 'immediately' regretted introducing the iris!

It immediately set out to prove my regrets wrong. **Where Eagles Dare** has continued to improve each year and because of its excellent growth and health, I have used it extensively in hybridizing. Most of my selected seedlings the last two years have **Where Eagles Dare** as one of the parents. Its presence will continue into the future through Helsley introductions.



SIBERIAN POPULARITY POLL - 2005

	<u>2005 Votes</u>	<u>2004 Rank</u>
ROARING JELLY (Schafer/Sacks '92)	15	1
BLUEBERRY FAIR (Hollingworth '97)	12	6
JEWELLED CROWN (Hollingworth '87)	11	RUNNER-UP
CORONATION ANTHEM (Hollingworth '90)	10	5
SULTAN'S RUBY (Hollingworth '88)	9	2
FOND KISS (Schafer/Sacks '99)	8	5
MABEL CODAY (Helsley '85)	8	RUNNER-UP
MESA PEARL (Bauer/Coble '94)	8	6
OVER IN GLORYLAND (Hollingworth '93)	8	4
SOMEBODY LOVES ME (Hollingworth '98)	8	5
STRAWBERRY FAIR (Hollingworth '94)	7	6
TOM SCHAEFER (Schafer/Sacks '00)	6
AT THE BALLET (Helsley '98)	6
CARELESS SALLY (Schafer/Sacks '96)	6	3
JUST CRUISING (Schafer/Sacks '01)	6	RUNNER-UP
RIVERDANCE (Schafer/Sacks '97)	6	7
DAWN WALTZ (Schafer/Sacks '98)	5
EMILY ANNE (Hollingworth '02)	5
HARPSWELL SNOWBURST (McEwen '91)	5	RUNNER-UP
HERE BE DRAGONS (Schafer/Sacks '03)	5
LADY VANESSA (Hollingworth '86)	5	7
MAGNUM BORDEAUX (Bauer/Coble '00)	5	6
SHAKER'S PRAYER (Warner '90)	5	4
SHALL WE DANCE (Hollingworth '92)	5	5
SHIRLEY POPE (McEwen '79)	5
STRAWBERRY SOCIAL (Schafer/Sacks '00)	5
WHITE AMBER (Schafer/Sacks '01)	5	7

RUNNERS-UP

BOOK OF SECRETS (Schafer/Sacks '00)
 CAESAR'S BROTHER (Morgan '32)
 DREAMING YELLOW (McEwen '71)
 ESTHER C.D.M. (McGarvey '82)
 GULL'S WING (McGarvey '89)
 LEMON VEIL (Bauer/Coble '00)
 ROSY BOWS (Bauer/Coble '00)
 RUFFLES AND FLOURISHES (Hollingworth '02)
 SHIPS ARE SAILING (Schafer/Sacks '98)
 TEMPER TANTRUM (McGarvey '86)
 THREE HAND STAR (Schafer/Sacks '01)



2005 POLL COMMENTS

by Barbara Schmieder, Massachusetts

Participation in the poll has dropped again this year. I couldn't even get many of my own Region 1 members to vote. So maybe we'll have to go to a printed poll with write-ins as an option. I've always opposed that. I always felt that you should be able to remember the names of irises that you like and vote for those. Now, as I am getting older, I realize that some people need a little memory jog and, as long as we can continue to have write-ins, I'll go along with it if we can increase participation.

Even with a low voting turn-out, the distribution was quite good: 13 states, Canada, Belgium, Lithuania and Sweden. There were seven irises new to the poll since last year and surprising numbers of votes for the top few.

Siberians were popular in our garden with 90 blooming and only five not blooming. Those five had good excuses, as two were tunneled by moles and three were 2004 intros. that got set too late in the fall. Among my favorites in our own Zone 5 garden in Concord, Massachusetts were:

At the Ballet – a beautiful pale lavender with up-right blue-green foliage.

Barbara Schmieder – an early tiny two-toned yellow that pales attractively and has lovely branching and narrow foliage.

Book of Secrets – ever-changing pale colors in basically white flowers – sometimes it looks all white and other times you can see some yellow in standards and signal and lavender in falls. Great name!

Dawn Waltz – always repeat blooms for us – a lovely short pinkish-lavender.

Mabel Coday – I'll never get rid of this one! Beautiful form on a blue-violet flower with white signal – makes a great clump.

Ships Are Sailing – a standout in the garden with tall, gorgeous two-tone blue that garden visitors went 'nuts' over this year.

Three Hand Star – mid-purple standards, darker purple falls, no signal, unusual shape.

At the Schafer/Sacks garden, I admired **Emily Anne** (*see p. 17*) which looks almost like a blue and white plicata. This Hollingworth iris was in our club auction and I bought it and hope to have it blooming next year. Marty and Jan's **Here Be Dragons** (*see inside front cover*) was looking great in their garden and, of course, so were many others including seedlings. I consider myself lucky to only live 15 minutes away from their garden.



2005 GARDEN OBSERVATIONS

I had a spectacular bloom on the Siberians this year and some clumps were almost crowded with blooms at their peak. Siberians started here in late June and continued until about July 20th with a few late blooms. **Over in Gloryland** is still my favourite Siberian in the garden - so beautiful and velvety. This year **Blueberry Fair** bloomed here and quickly took second place - what a wonderful ruffled bloom. **Turn A Phase** is also wonderful with it almost plicata edge and **Tom Schaefer** is the brightest yellow I've got in the garden although I saw a glimpse of **Lady's Chain** (*see p. 17*) with one bloom this year and it looked even darker yellow. {Jerry Huntley, Scotts Bay, Nova Scotia, Canada}

We are continuing to add a few Siberians to our (mostly Tall Bearded) garden each year and they are now rivals as favorites! We garden at 7,000 feet in the Rockies not far south of the Colorado

border with New Mexico. **Jewelled Crown** took Best of Show last month in Santa Fe. So, perhaps this year it is our favorite! **Shaker's Prayer**, appearing as a lacy spray when viewed from a distance, makes an eye-catching magnetic clump in the garden. **Rosy Bows**, arriving from Ensata Gardens in early May'05, bloomed June 3rd with temperature lows of 31 F. in mid-May rising to mid-40s F. later. The high of 80 F. on June 2nd must have given it great encouragement! *{Rosemary and John Cain, Taos, New Mexico}*

Hi there! We are in Zone 5 and have lots of pine trees and basalt rock around here. The soil is mostly clay and Siberians love it. I have them from really old ones up to the newest. I actually grow all kinds of iris that grow in Zone 4. I could have picked 20 more than I did! Some comments on some favorites: **Careless Sally** - unusual coloring and so perky; **Pixie Preview** - cute little squirt; **Aqua Whispers** - not sure why it is named that. Have **Strawberry Fair** and it was doing great until I decided to move it and boy, did 'she' pout about it. Almost lost it but she is looking better. Ordered more new ones this year and moved and divided mine. Need a strong grandson to dig them up for me. *{Norma Lunden, near Spokane, Washington}*

There are a great many wonderful Siberians now making it much harder to choose favorites. Those listed as favorites are all ones that I have grown for several years and many are old favorites. There are a number of new ones that I have only had a year or two (and getting several more), but wanted to see them bloom here on the Great Plains another couple of years before voting for them. This year the most impressive clumps we had were **Esther CDM**, **Where Eagles Dare**, **Velvet Night** and **Devil's Dream**. For the first time in 25 years of iris shows in Lincoln, a Siberian won Best of Show at our annual show. The Siberian was **Devil's Dream** and was a stunning stalk (even if I do say so myself, having exhibited the stalk). It wowed a lot of the people here who only grow Tall Bearded iris. *{Gary White, Lincoln, Nebraska – Zone 5}*

Some of my favorites this year: **Somebody Loves Me** - if it can bloom that well under the POOR growing conditions that the Missouri Botanical Gardens gave the guest Siberians, its gotta be good. **So Van Gogh** - I had to have this as Van Gogh is one of my favorite artists. **On Her Toes** (*see back cover*) - Lovely color. **Percheron** - always a favorite of mine. **Impression** - wonderful shades and style arms. **Roaring Jelly** - stays on my list even with the competition of new intros. **China Spring** - extends the season at the beginning and end and is a nice shape and color. {*Anna Mae Miller, Kalamazoo, Michigan*}

Here is an interesting formula: April - hot temps, high 80s; May - very cool, periods of frost, very wet; June - heavy rains followed by hot temps = short season and confused iris! But many Siberians performed well and these were exceptional: **Book of Secrets**, **Ruffles and Flourishes**, **Chandlers Choice**, **Over in Missouri**, **Sultan's Ruby**, **Sea of Dreams**, **Gull's Wing**, **Fond Kiss**, **Roaring Jelly**, **Just Cruising**, **Somebody Loves Me**, **Shadowed Eyes**, **Demure Illini**, **Countess Cathleen**, and **Linda Mary**. Plus my seedling patch was full of exciting new things! {*Bill Dougherty, Minnesota*}

Salamander Crossing: I can't make up my mind as one day I like and the next day I don't and then it reblooms. So, now I like the plant again. I never had rebloom of Siberians. But then again, we never had such a wet, cool spring with three inches of rain above normal. **Blackberry Jubilee**: first-year bloom and interesting blending of colors. {*Jeanette Graham, Twin Falls, Idaho, Zone 6a*}

The start of the Siberian iris bloom time was very early here in Belgium. First to bloom was **China Spring** and it was blooming at the same moment as the early TB irises. Most of my Sibs are growing as three-year clumps. Last year we had a small flower stalk count and so this bloom time we had several extras stalks. Many clumps were real eye catchers.

Some comments: **Blueberry Fair** - perfect form and colour

combination; **Coronation Anthem** - rebloomer for three consecutive years; **Over in Gloryland** - my personal favourite, every visitor asks for it; **Harpwell Snowburst** - favourite by many garden visitors; **Lorena Cronin** - best of the small flowering form with many flowers!; **Jiggles** - superb; **Rigamarole** - most exciting perfect pink peony form; **Summer Revels** - top for the yellow colour; **Maurice Pope** - very intense purple white, outstanding!; **Lady Vanessa** - superb every year. **Strawberry Fair** - overwhelming flower, colour, ruffles. This plant became infected by scorch last year. I started my treatment directly when I saw the first symptoms and this spring it started to grow without problems and had nine bloom stalks and till now it is growing normal.

I did this selection in my garden where I grow 180 different, old and new, Sibs. {*Willy Hublau, Belgium*}

Hal Stahly's **Frosted Emerald** was my favorite this year. It bloomed and bloomed and bloomed and then bloomed some more. **Chandler's Choice** bloomed much taller than registered and the color was striking. It glowed. **Emily Anne** bloomed tall on many bloomstalks for a long period and almost stole the show in the back garden and would have if not for **Shaker's Prayer** which really towered over that garden.

Bob Hollingworth's **Somebody Loves Me**, **Shall We Dance**, **Sultan's Ruby**, **Sweet Surrender** and **Very Victorian** were terrific. The late Currier McEwen's **Pansy Purple**, **Harpwell Velvet**, **Irish Mist**, **Little Centennial** and **Harpwell Princess Karen** were outstanding performers. Bauer/Coble's **Lemon Veil** and **Spindazzle** did dazzle and Schafer/Sacks' **Elegance and Simplicity**, **White Amber** and **Salamander Crossing** were gorgeous. Anna Mae Miller's **Cheery Lyn**, **Lilting Laura**, **Mary Louise Miche** and **Dancing Shadows** all had long and very pretty bloom. Jim Copeland's **Fisherman's Morning** put on a great show with its wonderful coloring and Chandler Fulton's **Raspberry Rainbow** lived up to its name. {*Ellen Gallagher, NH*}

NEW MEMBERS

MARTY ARTZBERGER

17367 E. Asbury Circle
Aurora, CO 80013

SUE ANN BARNES

205 Westwood
Jackson, TN 38301

LOTTA BERNLER

Galateagatan 8B
S-414 60 Gothenburg
Sweden

CAROLE BUCHHEIM

27876 Vista Road
Romaland, CA 92585

CHARLES BUNNELL

7941 Peshewa Drive
Lafayette, IN 47905

HELEN H. GRANT, MD

PO Box 1113
Eagle Butte, SD 57625

RYAN GRISSO

609 El Centro Road
El Sobrante, CA 94803

FRED KATONA

1079 Riverbank Street
Lincoln Park, MI 48146

JOAN KELLAR

4403 Wabash Avenue
St. Louis, MO 63109

DEBBIE LEWISON

48174 311 Street
Akron, IO 51001

INGE MESIK

779 105th Avenue
Plainwell, MI 49080

LORY PATRILLA

5798 29th Avenue Drive
Vinton, IA 52349

MAXINE PERKINS

PO Box 494
Mesilla Park, NM 88047

JOYCE POLING

17210 N Calico
Sim City, AZ 85373

PATRICIA RANDALL

758 Hood Road SE
Rio Rancho, NM 87124-4340

EARNIE & DEBORAH ROYAL

PO Box 41
Kirksey, KY 42054

CHARLES K. RUMBAUGH

3520 E Dudley Avenue
Indianapolis, IN 46227

W. MARTIN TEAGUE

6840 Westgate Road
Roscoe, IL 61073

ALI J. VAN KLEI

Crosswind Gardens
11368 Edmondson Road
Chilliwack, BC V2P 6H4
Canada

JANET L. WILKE

5406 Boy Scout Road
Indianapolis, IN 46226

CARRIE WINTER

5801 Masters Court
Charlotte, NC 28226

EARNEST YEARWOOD

136 Meier Circle, SE
Milledgeville, GA 31061

BACK TO THE FUTURE WITH SIBERIAN IRISES

by Calvin Helsley, Missouri

The Society for Siberian Irises has maintained the idea that a variety of forms, as long as pleasing, is acceptable and encouraged. This variety acceptance is evidenced by the winners of recent Morgan-Wood Medal recipients ranging from the pendant form of **Shaker's Prayer** and **Frosted Cranberry** to the ultra-broad and ruffled form of **Strawberry Fair** and **Blueberry Fair**.

Modern hybrids are the result of several generations based on crosses involving *Iris sibirica* and *Iris sanguinea*, although through hybridizer selection for the traits of width, ruffling and flaring form, I'm of the opinion that there are very few *Iris sibirica* genes remaining in modern hybrids. In most of today's current Siberian irises, a branched stem is the only *Iris sibirica* trait detectible.

Throughout the modern era of Siberian iris hybridizing there have been breakthroughs that have had a lasting effect on the future of this family of plants. In the 1960's, Dr. William McGarvey developed the "pinks" culminating with **Pink Haze** and **Augury** and, in the 1970's, Dr. Currier McEwen came up with the elusive yellow in **Butter and Sugar**. Dr. McEwen's groundbreaking tetraploids, developed by colchicine treatment, added another dimension to the Siberian family.

We are now seeing the development of two new groups of Siberian irises, in both cases, hybrids developed by combining the modern Siberian iris with a species selection. These retro-siberians result in forms that more resemble the species than the typical modern hybrid. These two new groups are 1) hybrids involving mainly *Iris typhifolia* and 2) hybrids involving *Iris sibirica* through **Snow Prince** (*see inside back cover*). As a hybridizer, I have been guilty of selecting for only the wide, broad form and must admit that at first I did not care for these new retro-siberians. As I see more of

these irises and what they are adding to the Siberian family, I have changed my mind.

The first group of retro-siberians are those that have added *Iris typhifolia* to the mix. *Iris typhifolia* has been in cultivation for a relatively short time and is somewhat variable in color and form but has the valuable trait of flowering very early, often with the standard dwarf bearded iris. When combined with present day hybrids we have seedlings that extend the flowering season from the time of SDB flowering to the 'normal' time of Siberian flowering, thereby extending the Siberian season by two to four weeks.

Bob Bauer and John Coble were the first to introduce a retro-siberian from the group with **China Spring**. As well as flowering early, it is a very heavy bloomer and a definite plus to the garden. Dave Niswonger, noted for his work with spurias and tall bearded iris, has now started working with our favorite iris and has introduced several retro-siberians from this group in various colors. They range from white (**China White**), to lavender (**China Lavender**) (see p. 17) and blue (**China Bitone**). All of these *Iris typhifolia* crosses are still closer to the form of the species but within time we will have a more modern form flowering early in the season.

More retro-siberians

The second group of retro-siberians are those that have gone back to pick up genes that have been lost through generations of hybridizing and selection. Actually examples of this type of hybridizing can be seen in the work of Ben Hager in the 1970s with **Sparkle**. He continued with this line giving a second generation with **Pink Sparkle**. To the best of my knowledge, this line was not continued.

Marty Schafer and Jan Sacks must be commended for the work they have done with this line of retro-siberians. They selected **Snow Prince** as a source of *Iris sibirica* and the results have been amazing. First generation introductions include **Banish Misfortune**, **Sarah Tiffney**, **Salamander Crossing** and **Pennywhistle**. These cultivars are very vigorous and make striking clumps of color in the garden. It wasn't until I saw the second generation that I became a fan of these irises. **Sweet Little Susie** (see inside back cover) convinced me! It has the look of the species 'but' in a modern, flaring, wide form. Then came **Crème Caramel** (see p. 16) and **Here Be Dragons** with colors that hadn't previously been seen in the Siberian family. This year brought **So Van Gogh** with the appearance of a blue/yellow bicolor. **Uncorked**, with its blue over yellow giving a green/brown appearance, is a third generation retro-siberian that shows that this group of plants will have an unpredictable influence on the future of Siberian irises.

Having seen slides of several third and fourth-generation seedlings from this line has left me in complete awe of the possibilities of retro-siberians. New colors such as smoky pinks and blues, raspberry, green, browns, bicolors that have previously been unheard of in Siberian irises already exist and will soon be available. A big 'thank you' must go to Marty and Jan for their insight and the time spent in developing a completely new line of Siberians.

Now, who will be the hybridizer that will combine these two groups of retro-siberians and then convert them to the tetraploid level? The future of Siberian irises is certainly exciting!





SURFING SAFARI
(*L. MILLER '03*)



CRÈME CARAMEL
(*SCHAFER/SACKS '03*)



NOT QUITE WHITE
(*SCHAFER/SACKS '03*)



QUIDAM
(*HELSLEY, R. '03*)



HANDSOME HARRY
(LOUISE BELLAGAMBA, R. '02)



LADY'S CHAIN
(SCHAFFER/SACKS '05)



EMILY ANNE
(HOLLINGWORTH '02)



CHINA LAVENDER
(NISWONGER '02)

THEISSEN GARDEN

by Sandy Ives, Ontario, Canada

The garden of Mike and Bev Theissen featured all of the Siberian and species iris that any normal gardener could ask for... so why the long faces?

What do I have to do to see late season Siberians in bloom? Here we are, first day of the AIS convention, mid-late TB season... and almost everything Siberian is coloring up. What's a poor boy to do, steal a bus and come back Saturday? You're kidding. We ARE coming back Saturday?

Seriously now, the AIS Convention in St. Louis was a real opportunity to see how well the various cultivars aged in the garden. The weather was quite warm leading up to the convention to the point where the organizers were quite concerned they would have a pod convention. It cooled sufficiently to relieve their stress, but it did have an impact on the Siberians.

The Theissen garden was no exception. It was a very well put-together convention garden, with excellent spacing, fine grooming and wonderful hosts. The Siberians and species were in two beds that had some dappled shade from a nearby tree.

Most of the Siberians had suffered from the weather in that they were almost all shorter than usual and were not fully mature clumps. There were exceptions - **Where Eagles Dare** towered over everything and showed very well both days. However, I can safely say that those who passed up the return trip to the Theissen garden missed some real treats.

What caught my eye? **On Her Toes** was interesting on Thursday, but absolutely outstanding on Saturday. A reasonable clump, blooms held above the foliage with excellent sequence of bloom, each well-spaced. I made a note to review it again for its foliage habits; it may have a tendency towards fountaining – attractive enough until August, but messy afterwards. The bloom itself was a

pale blue-violet, wide, and well-ruffled. It received a great deal of attention, and was a runner-up for the Franklin Cook Cup.

Here Be Dragons ... you could love it or hate it, depending on your feelings for the color combination. The very pale yellow standards, cream style arms with a darker violet heart, and the dark yellow falls with the violet overlay... well it's not found in the centerpiece at high tea.

The disappointments? Everything is timing. The late Siberians never got past colored buds. This took in most of the Hollingworth seedlings and poor **Emily Anne** was just starting. I suspect that their performance would have been enhanced had they received full sun throughout the day.

The ones that had me reaching for my wallet? Dave Niswonger registered his 'China' series in 2001 as Spec-X, but they all have significant *Iris typhifolia* parentage. As such, they were early bloomers with what might seem to be the typical narrow foliage for *Iris typhifolia*, but it seemed apparent that the foliage of these crosses would remain upright far longer than the species.



GARDEN OF MAE PORCH

by Jim and Jill Copeland, Michigan

If you were not at the AIS convention in St. Louis you missed some beautiful gardens and iris bloom. Mae Porch is a newcomer when it comes to the world of iris. She got interested in iris when she saw a Louisiana iris blooming at the Zoo. "I just had to have that iris", Mae related.

The Siberian guest iris were in the front of the house and were doing well but many were not yet in bloom. Calvin Helsley's 1996 Siberian hybrid introduction, **Carmen Jeanne**, was growing very well. We missed the ruffled violet-blue flowers with their large white signals. Mae had a real show with 20 stalks on the three-year plants and each stalk had two branches with three buds.

Calvin's **Navy Trim** with its navy blue edge and veins had 40 stalks. Each stalk had two branches with four buds. What a show that will be in full bloom! Calvin's **Where Eagles Dare** is one of our favorites. It is a ruffled creation of deep-purple velvet with white signals. Each stalk had two branches and six buds and it was the only one of Calvin's in bloom in this garden.

Roger & Lynda Miller's 2003 introduction, **Surfing Safari** (*see p. 16*), was not blooming. With 11 stalks in varying stages of development, Mae will be treated to a long season of the beautiful velvety royal-blue flowers with wire thin white rim and bright signals. Too bad we couldn't go back in a week.

Hiroshi Shimizu's **Ama-No-Hame** (*see inside front cover*) is a six-fall light pink Siberian. Mae's clump had 25 stalks with two branches each and it was in bloom in this garden.

Bob Hollingworth's siberian seedling, 97 C4 B1 is a mid-lavender with a creamy white signal. In Mae's garden it had 15 stalks. Bob's 98 G10 A17 is a lovely red-violet and 98 G10 B9 is a round, ruffled, and velvety violet which gets lighter towards the edge. In Mae's garden it had eight stalks.

Bob's **Lavender Fair** with its lovely lavender ruffled flowers was the last of the beardless irises blooming in Mae's front garden.

Mae moved into her new home in November 1999. Behind her house was a hill full of stones and poor soil where Mae had two impressive new 90-foot walls built and hauled in good soil. As she was trying to determine how to landscape above the walls, members of GSLIS approached her about being a tour garden for the 2005 AIS Convention. She accepted the offer. When the guest iris came "I planted them and turned them over to the Lord".

Mae cares for her garden by herself and, before the guest irises arrived, she dug the beds and then planted the 225 guest irises when they arrived. The meticulous care that was taken showed in the way the plants were flourishing and the patio behind Mae's house lets you sit and relax and view the iris at eye level and above. Alas, we had to get on the bus.



HUGHES AND GORMLEY GARDENS

by Lynda Love, Colorado

The Nyla Hughes garden was a delightful combination of tall trees and sunny borders. It was a beautiful garden to explore. There were a few beardless convention guests, but the bloom was quite sparse. I witnessed the last flower of **Tourist**, a Schafer/Sacks species. Ms. Hughes had a small collection of old and newer Siberian irises growing in part shade in the back garden. The collection included **Caesar's Brother** through **Demure Illini** and newer varieties such as Stahly's **Active Duty** and Hollingworth's **Somebody Loves Me**.

The garden of Tom and Rita Gormley was another woodland garden out in the country. Here too, the convention beardless bloom was quite sparse. However, two Schafer/Sacks' Siberians, **Crème Caramel** and **Here Be Dragons** were blooming valiantly. **Dream On Dream**, a very pale blue Siberian by Bob Barker was blooming. The Gormley's own collection of Siberians included **Pink Haze**, **Shaker's Prayer** and **Trim The Velvet**.



SIBERIAN CHECKLIST NOTICE

The cumulative Siberian iris checklist will be available again in 2006. It will include Siberian registrations and introductions updated through 2005 and the price is \$7.00 payable to the Society for Siberian Irises. Contact Ellen Gallagher, 1689 Riverside Drive, Berlin, NH 03570 or email: ellengalla@yahoo.com.

ANOTHER SHOWER OF IRIS

2006 Siberian/Species Convention

Portland Oregon - May 28, 2006

Full Registration: By March 1st '06: \$89.00

After March 1st '06: \$99.00

Includes garden tours

*BBQ Rib lunch, convention booklet
and Banquet*

Banquet Only: \$35.00

Registration Limit

It is unfortunate that we cannot open this to everyone who might wish to go but we do have a limit on the number of registrants that can be accommodated in these two wonderful gardens. That limit is three buses per garden so it will be slightly over 300 people that can go on this exceptional tour, so PLEASE get your registrations in early if you wish to be part of this tour.

Special Needs: If you have special dietary requirements, please be sure to note them at time of registration as we will not be responsible if it is not noted.

Name: _____

Spouse or second person: _____

Address: _____

City _____ State _____ Zip Code _____

Phone Number _____

E-Mail _____

Make Checks Payable to Siberian/ Species Convention 2006

Send To:

Keith McNames, Registrar

Siberian/Species Convention 2006

7711 Pries Drive N.E.

Salem, OR 97303-7842

CHEHALEM GARDENS

by Tom Abrego, Oregon

We have operated Chehalem Gardens, a small mail-order nursery specializing in Siberian and Spuria Iris since 1982. Our home sits on 27 acres in the Dundee hills in the heart of Oregon's wine country. Come enjoy our great views.

A hazelnut (filbert) orchard sits above our home. We operated the orchard for years but recently decommissioned it. We have already removed half the orchard and the remainder will soon be removed. The paths of our upper garden lead through our Bark Allee to rock, scree and perennial gardens. Our collection of unusual perennials, shrubs and trees features rhododendrons and roses.

Situated below our house, our Iris garden includes seven display beds and a small field. The three beds near the grape arbor at the top of the garden contain the 177 beardless Iris we received as guests for this convention. Two other beds at the top of the Iris garden contain recent Siberian Iris acquisitions. Our planting of over 200 mature clumps of Siberian Iris may be found in the long display bed by the road. A coin-operated rope tow should be operational by May 2006...bring lots of quarters! A 'C' shaped bed above our walled garden contains our planting of mature Spuria Iris. And although Chehalem Gardens is now semi-dormant, we have maintained a small commercial field of Siberian and Spuria Iris, planted in the fall of 2004.

We encourage you to take the time to walk down the path lined with weeping sequoias taking you to our walled garden. Begun in 1994 with four stakes in the ground and a twinkle in our eyes, this colossus contains over 10,000 wine bottles, each meticulously drained. Definitely a work in progress, it is said to be visible from outer space.



LORENA REID GARDEN

by Lorena Reid, Oregon

The Lorena Reid Garden (formerly Laurie's Garden) in the beautiful McKenzie River Valley on an all too busy highway which goes from the beach to the Cascade Pass (advertised: from sea level to ski level). Though there are not as many plants here as during the years when we were actively "nursery-ing", there will be lots to see. The Siberian, species, and interspecies guests will be in Section J....follow the driveway back and mosey among the 11 rows of plants there.

Some of the guests have made huge clumps; others have grown more sparsely; some didn't make it....you'll see the labels and blank spots where they should have been. Bloom among the guests begins in early May, and if this past year was any indication does not end till the middle of July. Some of the versicolors, and some of the II-versicolor hybrids are rebloomers. We hope there will be lots of bloom during your visit.

Elsewhere in the garden is a planting of Japanese Irises, species irises, and interspecies irises, including seedlings. There should be bloom in many places.



PAST ISSUES OF TSI AVAILABLE

Past issues of TSI are available for sale as follows:

Spring 1961 through Fall 1970

cost: \$18.00 (includes shipping at book rate)

Spring 1971 through Fall 1980

(Spring '74, '77, Fall '79 will be copies)

cost: \$18.00 (includes shipping at book rate)

Spring 1981 through Fall 1990

(Spring '85, '87, Fall '85, '86 will be copies)

\$18.00 (includes shipping at book rate)

Spring 1991 through Fall 2000

(Spring '91 will be a copy)

\$18.00 (includes shipping at book rate)

Complete set Spring 1961 through Fall 2000

(with copies as listed above)

\$60.00 (includes shipping at book rate)

Single copies

(from Spring 1961 to the present)

\$1.50 per issue (includes shipping by 1st class mail)

Shipping for overseas members will be at cost.

Please send your order to Judy Hollingworth

124 E. Sherwood Rd.

Williamston, MI 48895

Check payable to SSI.



ADVERTISING RATES

A source list for Siberians is printed in the spring issue of TSI at a cost of \$5.00 per listing. Please send your check, made payable to the Society for Siberian Irises, to the editorial office at: 1689 Riverside Dr., Berlin, NH 03570 by February 1st of each year.

OTHER ADVERTISING RATES:

FULL PAGE COLOR (4" x 7")	\$60.00
FULL PAGE B&W (4" x 7")	50.00
HALF PAGE B&W (4" x 3 1/2")	30.00
1/4 PAGE B&W (4" x 1 1/2")	20.00

(questions write to: ellengalla@yahoo.com)



SIBERIAN IRIS SLIDE SETS

***SLIDE SETS SUITABLE FOR A CLUB PROGRAM,
INCLUDING AN HISTORICAL SET,
ARE AVAILABLE AT \$10.00 PER RENTAL FROM:***

**BOB HOLLINGWORTH
124 SHERWOOD RD., EAST
WILLIAMSTON, MI 48895**

**Please make check payable to R. M. Hollingworth
E-mail: cyberiris@cablespeed.com**



NOMINATING COMMITTEE REPORT

Submitted by Judy Hollingworth, Chair, Nominations Committee

The nominating committee submits the following slate of candidates for office in the Society for Siberian Irises. If approved the terms of office would be from January 1, 2006 to December 31, 2008.

Directors: **Dana Borglum**
Katharine Steele

The bylaws require that these nominations be sent to all voting members of SSI by November 15 (publication in TSI fulfills this requirement). If no additional nominations have been made within 4 weeks, that is by December 15, the slate is to be considered elected.

Additional nominations may be made in writing, signed by at least eight members “acting in concert”, that is all signing the same nomination petition, and sent to the chair of the Nomination Committee not later than December 13 together with a letter of consent from each candidate. In this case the Elections Committee shall prepare a ballot including all nominations and designating those made by the Nominating Committee. The ballot shall be mailed to all voting members not later than January 15 with instructions for voting by mail. Ballots must be returned to the committee not later than February 1, 2006.



SOCIETY FOR SIBERIAN IRISES

BOARD MEETING

St. Louis, Missouri
Tuesday, May 10, 2005

Call to Order: President E. Roy Epperson called the meeting to order at 4:00 pm.

Approval of Minutes from April 20, 2004 as printed in TSI, Volume 10, Number 6, Fall 2004, pp 25-28.

Discussion of 2006 mini-Convention of SSI. Presentation by Will Plotner, General Chairman. Full details will be forthcoming in the fall 2005 issue of TSI.

Reports of Officers

President: E. Roy Epperson: The 7th edition of the AIS Judge's Handbook will be published for the Portland Convention in 2006. Any changes needed for the Siberian section should be sent to Roy. There will be no more SSI checklists printed this year but there will be a new printing for 2006.

First Vice President: Judy Hollingworth (given by E. Roy Epperson) New Invitations to Join (IJT) were printed and have been distributed. More are available from Judy. Also, Judy has TSI back-issues available for sale. Nominating Committee report: Dana Borglum and Katherine Steele have been recommended for a second three year term to expire on 12/31/08.

Second Vice President: Sandy Ives: no report

Secretary: Lynda Love: no report

Treasurer: Jim Copeland: Jim presented the treasurer's report and noted the negative income for 2004, mostly due to IJT printing expenses.

Editor: Ellen Gallagher: Ellen is still doing the mailing for TSI herself.

Administrative Reports

Slides (Bob Hollingworth): The slides were rented about eight times in 2004. A new set of historic Siberians was assembled and rented. Bob requests slides of Siberians in the landscape setting and slides of Siberians introduced before 1975. The slide rental fee will increase from \$5 to \$10 to cover shipping.

Membership Secretary: Susan Grigg: SSI is having trouble holding onto single one-year memberships and total paid memberships have decreased. She sent a second renewal notice and got some results. Susan also brought up the issue of expensive foreign mailing. She reported that Joyce Polling has been including a SSI IJT in new AIS membership packets. Susan also suggested that commercial Siberian iris growers be contacted to see if they would be willing to put a SSI IJT in with each Siberian iris order.

Susan will get two quotes for a display board (similar to the AIS display board) to be used at conventions and meetings.

Lynda Love, Secretary



SIBROB

The Sibrob is an internet mailing list (discussion group) centered on Siberian irises. It is free and open to all from novices to more experienced growers. It also functions as a part of the Round Robin program of the American Iris Society. Any questions please contact: ellengalla@yahoo.com

Subscribe: subscribe@yahoogroups.com
<http://groups.yahoo.com/group/sibrobl/>



SOCIETY FOR SIBERIAN IRISES

TREASURER'S STATEMENT

By James A. Copeland

Income Statement 2004

Income		
Ads		\$ 365.00
Interest Income		278.13
The Siberian Iris book royalties		15.74
Membership		2,555.40
Checklists		272.39
Donations in Memory of Currier McEwen		125.00
Donation in Memory of Ruth Wilder		50.00
Gifts		100.00
Auction at Fresno		226.00
Total Income		\$3,987.66
Expenses		
Membership Chairperson Expenses		\$ 219.60
Previous Membership Chairperson Expenses (2003)		68.68
Bank Charges		16.95
SSI Invitations to Join		601.00
Surplus TSI Bulletin Retrieval		37.70
Checklist Printing		190.00
Checklist Mailing		25.40
TSI Publication -		
Spring 2004 Smith & Town		
Printing	\$1,730.00	
Mailing	167.29	
Total		\$1,897.29
Fall 2004 Smith & Town		
Printing	\$1,365.00	
Postage Permit	150.00	
Mailing	211.93	
Total		<u>\$1,717.93</u>
	Total	\$3,615.22
	Total Expenses	\$4,774.55
	Net Income	- \$786.89

Balance Sheet As of 12-31-2004

Assets		
Bank Accounts - Checking	\$174.24	
Total	\$174.24	
Investments		
Certificate of Deposit 1.34% APY due 4-10-05	\$3,535.29	
Certificate of Deposit 2.96% APY due 9-16-06	\$8,255.13	
Certificate of Deposit 2.86% APY due 10-18-06	\$3,133.23	
Total	<u>\$14,923.65</u>	
Total Assets		\$15,097.89

THE SOCIETY FOR SIBERIAN IRISES

Section of the American Iris Society

OFFICERS

President: E. Roy Epperson
1115 Delk Drive
High Point, NC 27262-3419
(336)883-9677; **kirklee@triad.rr.com**

1st V.P.: Judy Hollingworth
124 Sherwood Rd. E.
Williamston, MI 48895
(517)349-8121; **cyberiris@cablespeed.com**

2nd V.P. Sandy Ives
1077 Guertin Avenue
Ottawa, ON Canada K1H8B3
(613)521-4597; **rives@rogers.com**

Secretary: Lynda Love
4900 E. Dartmouth Avenue
Denver, CO 80222-7333
(303)757-1750; **rxiris@comcast.net**

Treasurer: Jim Copeland
78118 M-40
Lawton, MI 49065
(269)624-1968; **Jandjcope@aol.com**

~~~~~

**DIRECTORS:** *Carol Warner* (ex officio)  
16815 Falls Road  
Upperco, MD 21155  
(410)374-4788; **draycott@qis.net**  
*Dave Niswonger* (2006)  
822 Rodney Vista Blvd.  
Cape Girardeau, MO 63501  
(573)334-3383; **capeiris@aol.com**  
*Peter Weixlmann* (2006)  
280 Seneca Creek Road  
West Seneca, NY 14224  
(716)674-6289; **PWeixl@aol.com**  
*Chad Harris* (2006)  
P.O. Box 436  
Washougal, WA 98671-0346  
(360)835-1060; **Chad <dalegrams@prodigy.net>**

*Dana Borglum* (2005)  
2202 Austin Road  
Geneva, NY 14456-9118  
(585)526-6729; **Sylborg@aol.com**  
*Katharine Steele* (2005)  
2121 Sedley Road  
Charlotte, NC 28211  
(704)364-1639; **rdsteele@carolina.rr.com**  
*Ellen Gallagher* (Editor)  
1689 Riverside Drive  
Berlin, NH 03570  
(603)752-5731; **ellengalla@yahoo.com**

## COMMITTEES \_\_\_\_\_

### ***Display Gardens:***

- 1) ***Bill Smoot***, 213 Derby Rd., Portsmouth, VA 23702; (757)393-4617;  
**BillSmoot@earthlink.net**
- 2) ***Bill Dougherty***, 7420 Concerto Curve, Fridley, MN 55432  
(763)785-2543; **Wmcdougherty@cs.com**

### ***Membership:***

***Susan Grigg***, 105 Trotters Ridge Drive, Raleigh, NC 27614-9620  
(919)870-8345; **smgrigg@bellsouth.net**

### ***Nominating Committee:***

- 1) ***Sandy Ives***, 1077 Guertin Ave., Ottawa, ON Canada K1H8B3  
(613)521-4597; **rives@rogers.com**
- 2) ***Anna Mae Miller***, 1700 Bronson Way, Apt. 177, Kalamazoo, MI, 49009  
(269)349-5934; **Irisquilt@aol.com**

***Publicity: Tom Abrego***, 19105 NE Trunk Rd., Dundee, OR 97115  
(503)538-8920; **Bhuz@aol.com**

***Robins: Michael Zarky***, 10963 Citrus Dr., Moorpark, CA 93021;  
**mzarky@earthlink.net**

***Research/Slides: Bob Hollingworth***, (same as Judy Hollingworth)





**SNOW PRINCE**  
(*TIFFNEY '90*)

**Snow Prince** and **Sweet Little Susie** are both referenced in the article on retro-siberians on page 13.

**Snow Prince** is the pollen parent of **Sweet Little Susie**.

**SWEET  
LITTLE SUSIE**  
(*SCHAFER/SACKS '01*)





**ON HER TOES**  
**(SCHAFFER/SACKS '04)**